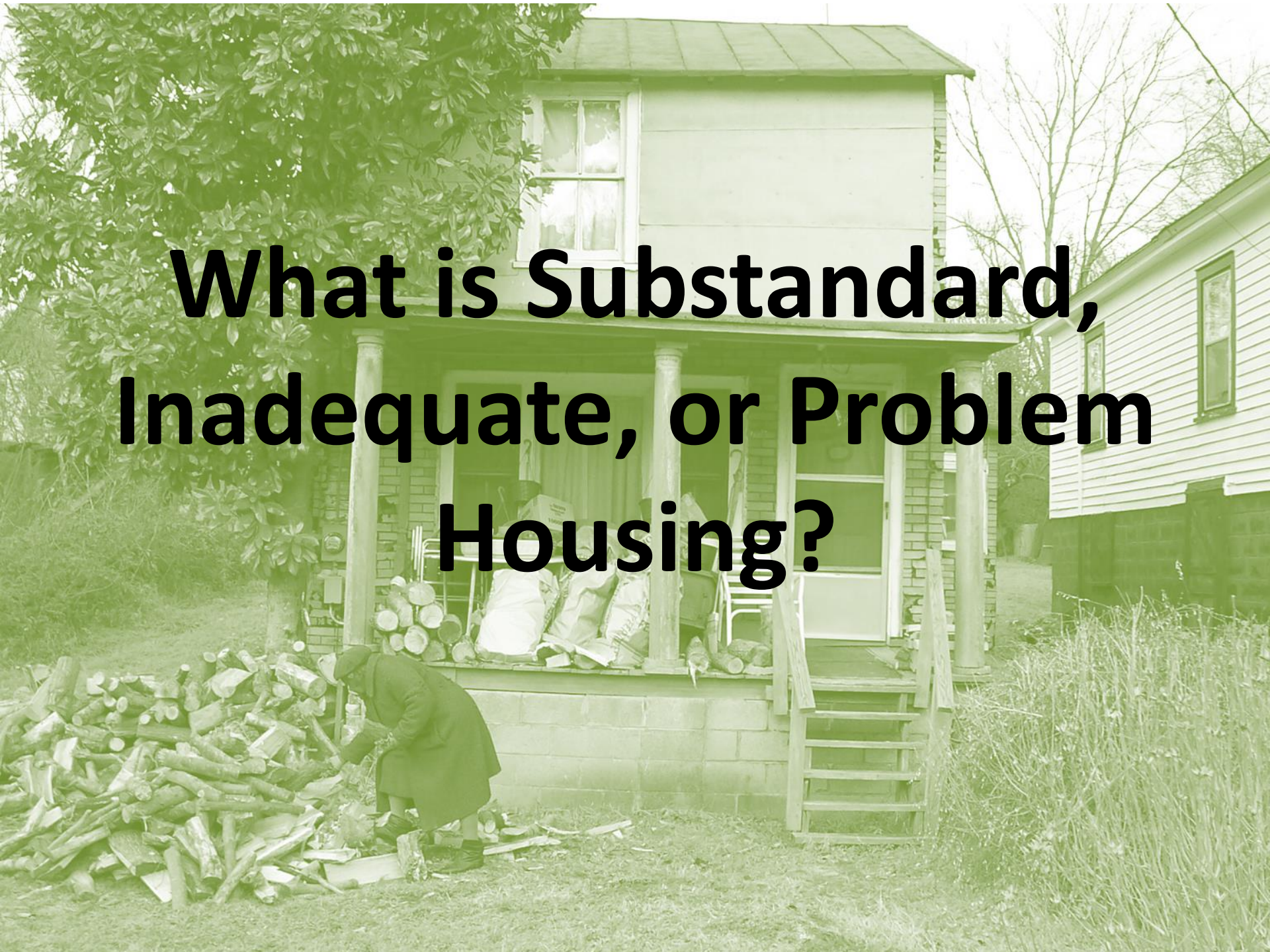


Working Towards a Better Measure of Inadequate Housing

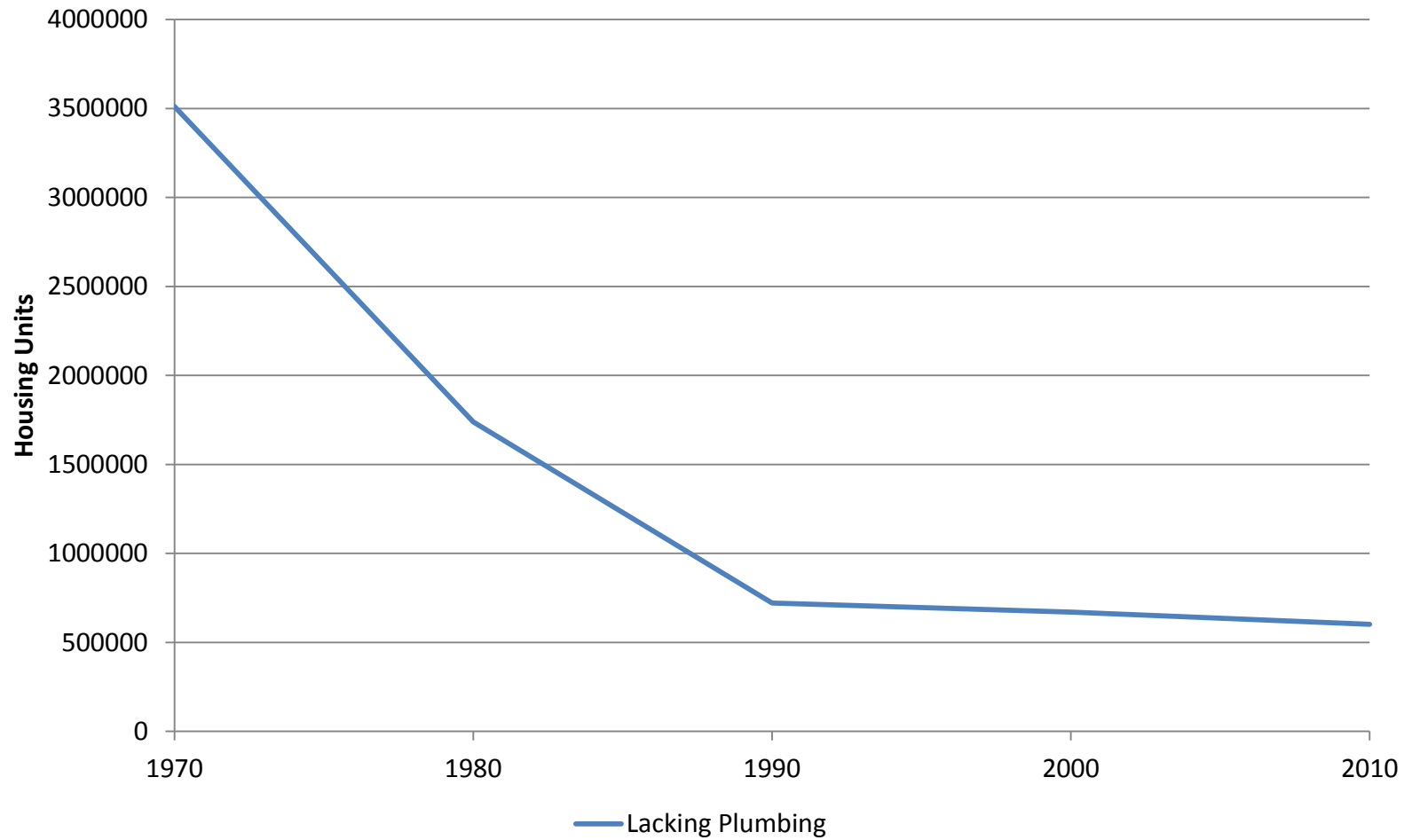


Housing Assistance Council

What is Substandard, Inadequate, or Problem Housing?

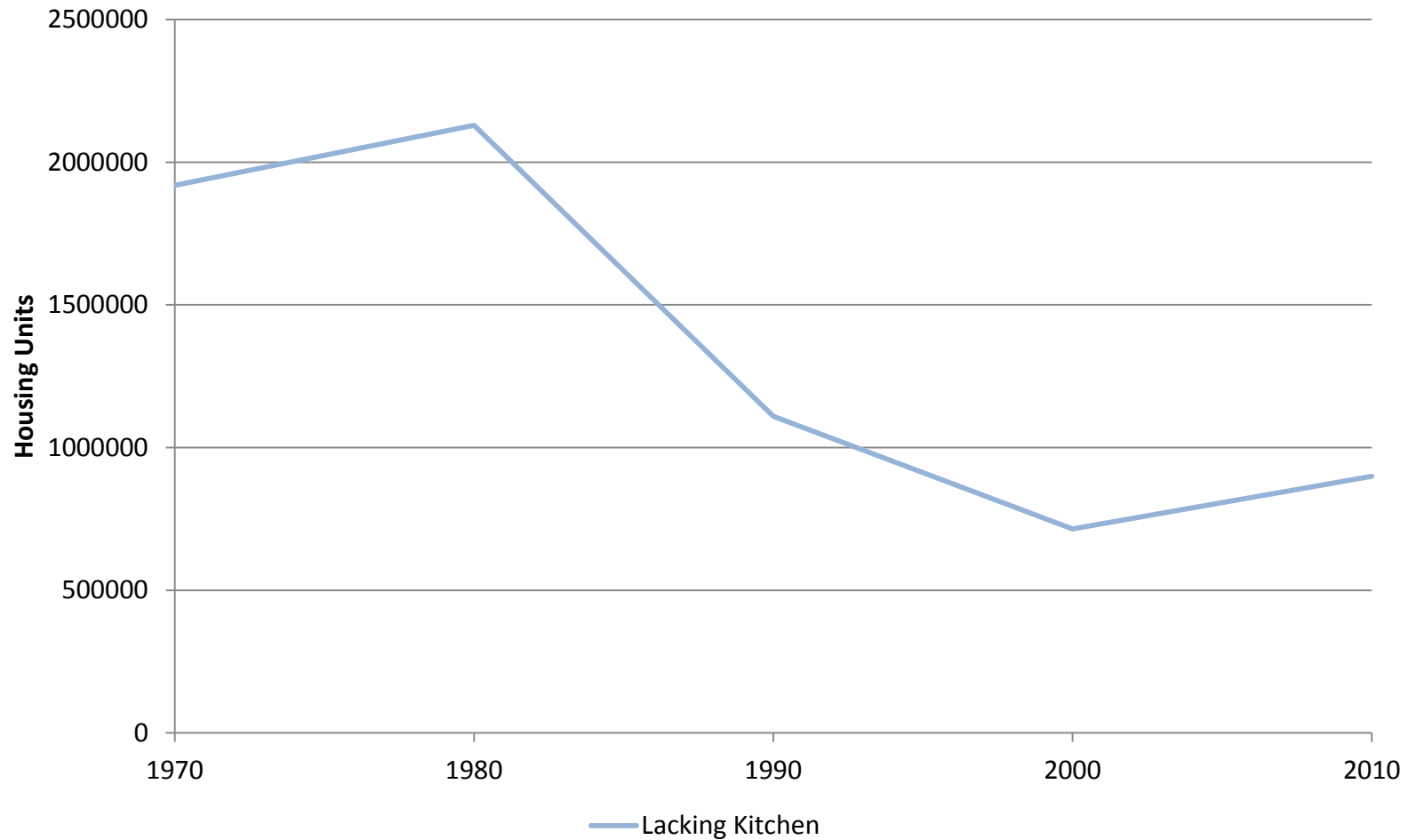


Lacking Plumbing Characteristics, 1970 - 2010



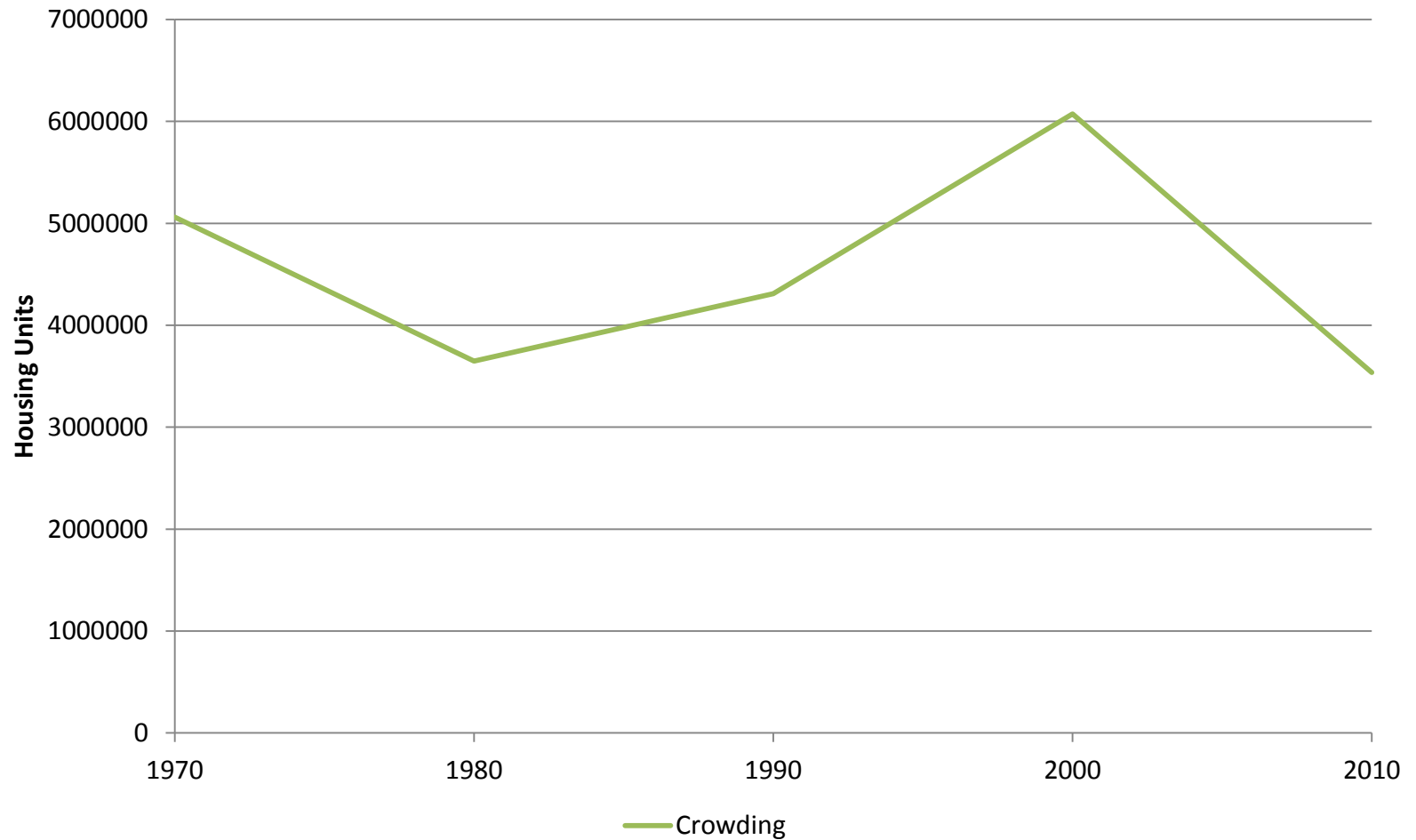
HAC Tabulations of Decennial Census & American Community Survey Data

Lacking Kitchen Characteristics 1970 - 2010



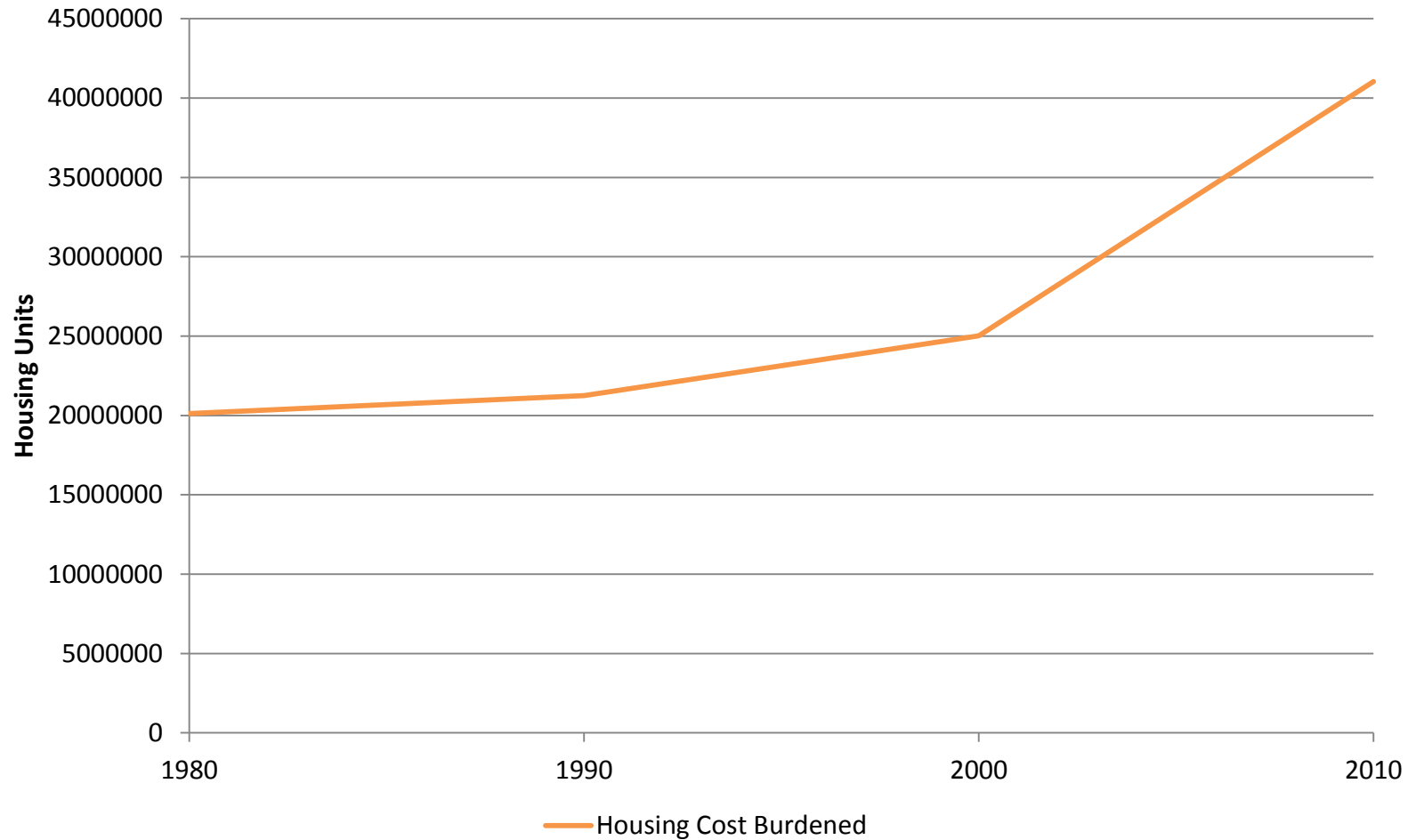
HAC Tabulations of Decennial Census & American Community Survey Data

Crowded Housing Characteristics, 1970 - 2010



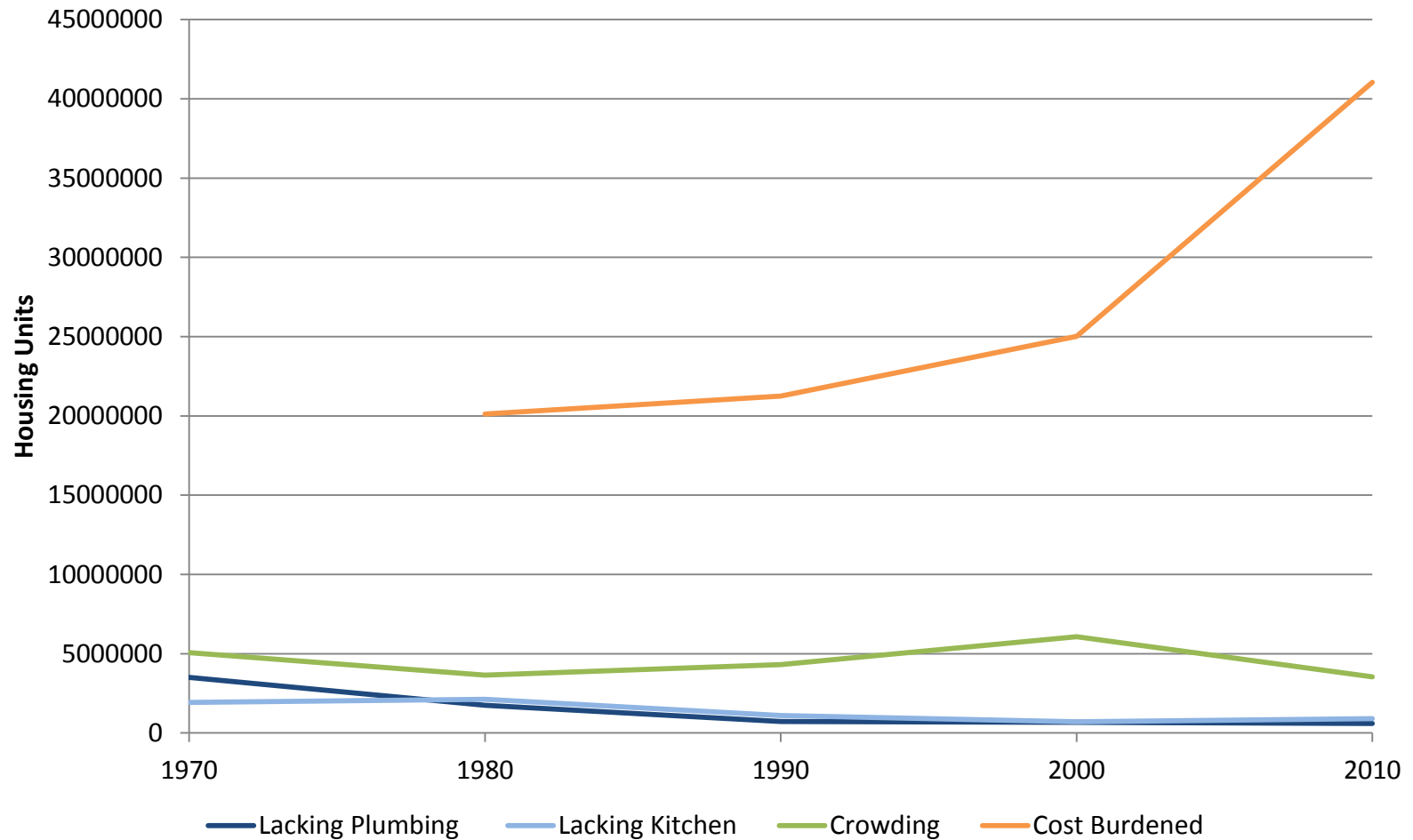
HAC Tabulations of Decennial Census & American Community Survey Data

Housing Affordability Characteristics, 1990 - 2010

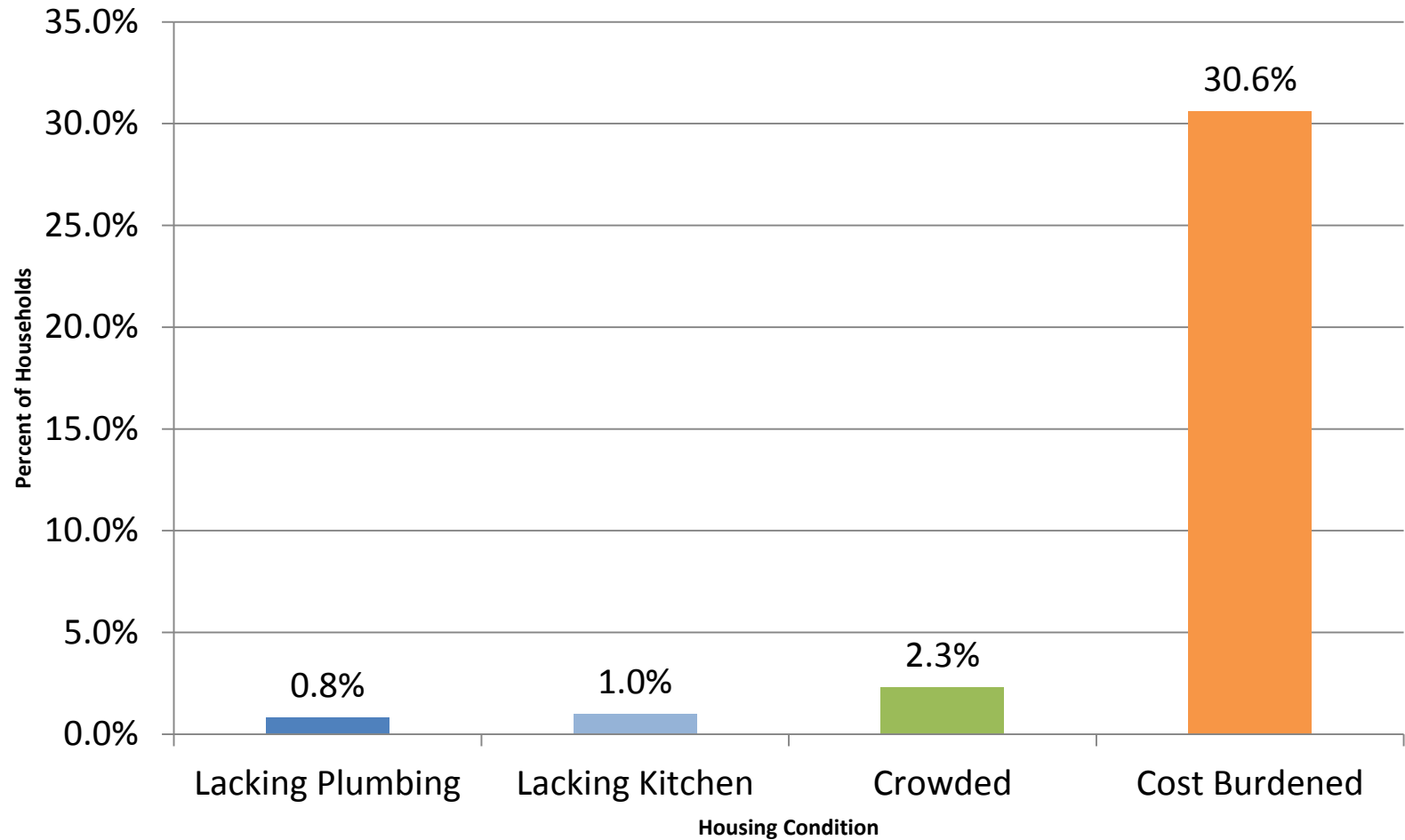


HAC Tabulations of Decennial Census & American Community Survey Data

U.S. Selected Housing Characteristics, 1970 - 2010



Selected Housing Conditions in Rural America, 2012



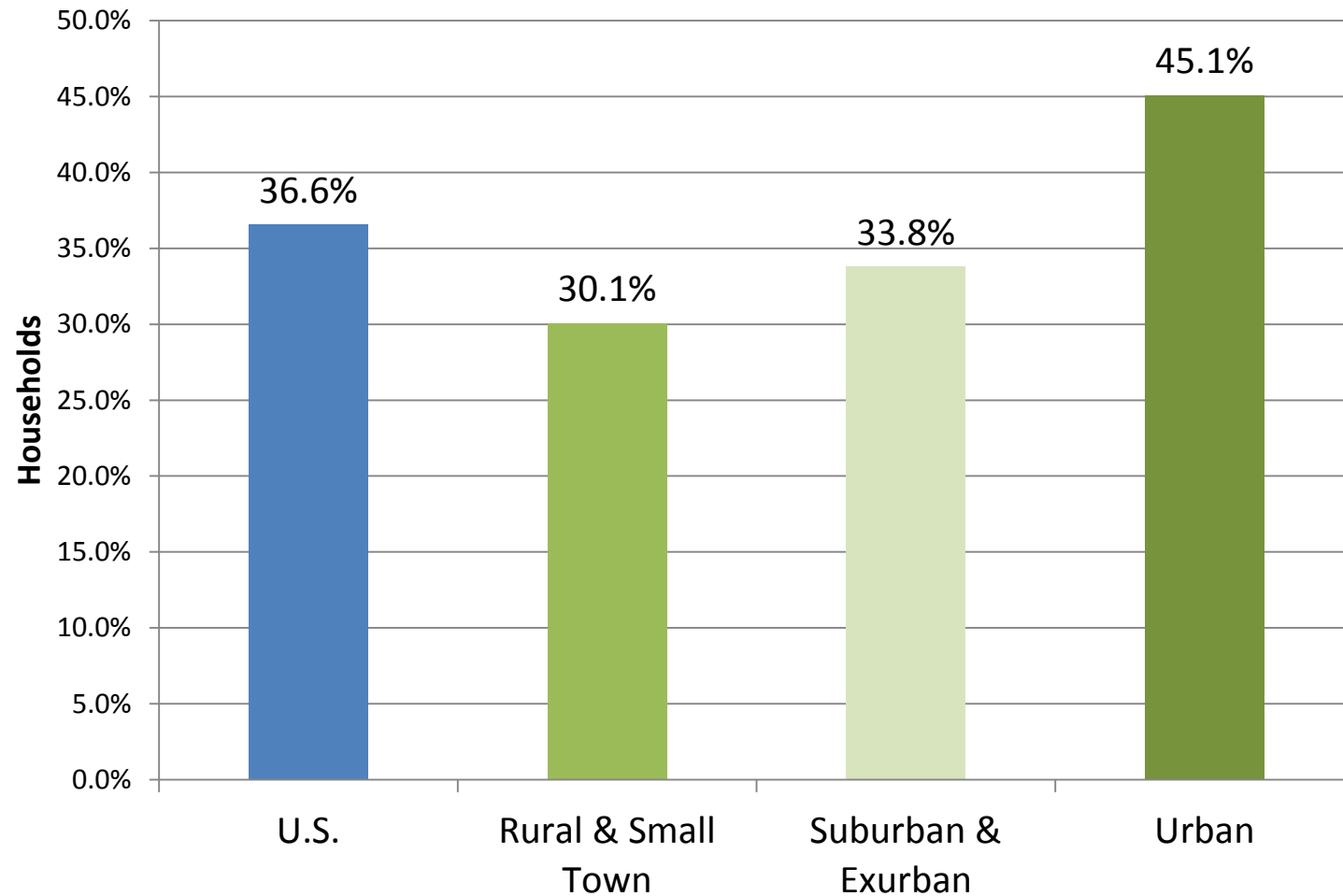
HAC Tabulations of Decennial Census & American Community Survey Data

A Composite Measure Concept

The variable "Selected Conditions" is defined for owner- and renter-occupied housing units as having at least one of the following conditions:

- 1) lacking complete plumbing facilities,
- 2) lacking complete kitchen facilities,
- 3) with 1.01 or more occupants per room,
- 4) selected monthly owner costs as a percentage of household income greater than 30 percent, and
- 5) gross rent as a percentage of household income greater than 30 percent.

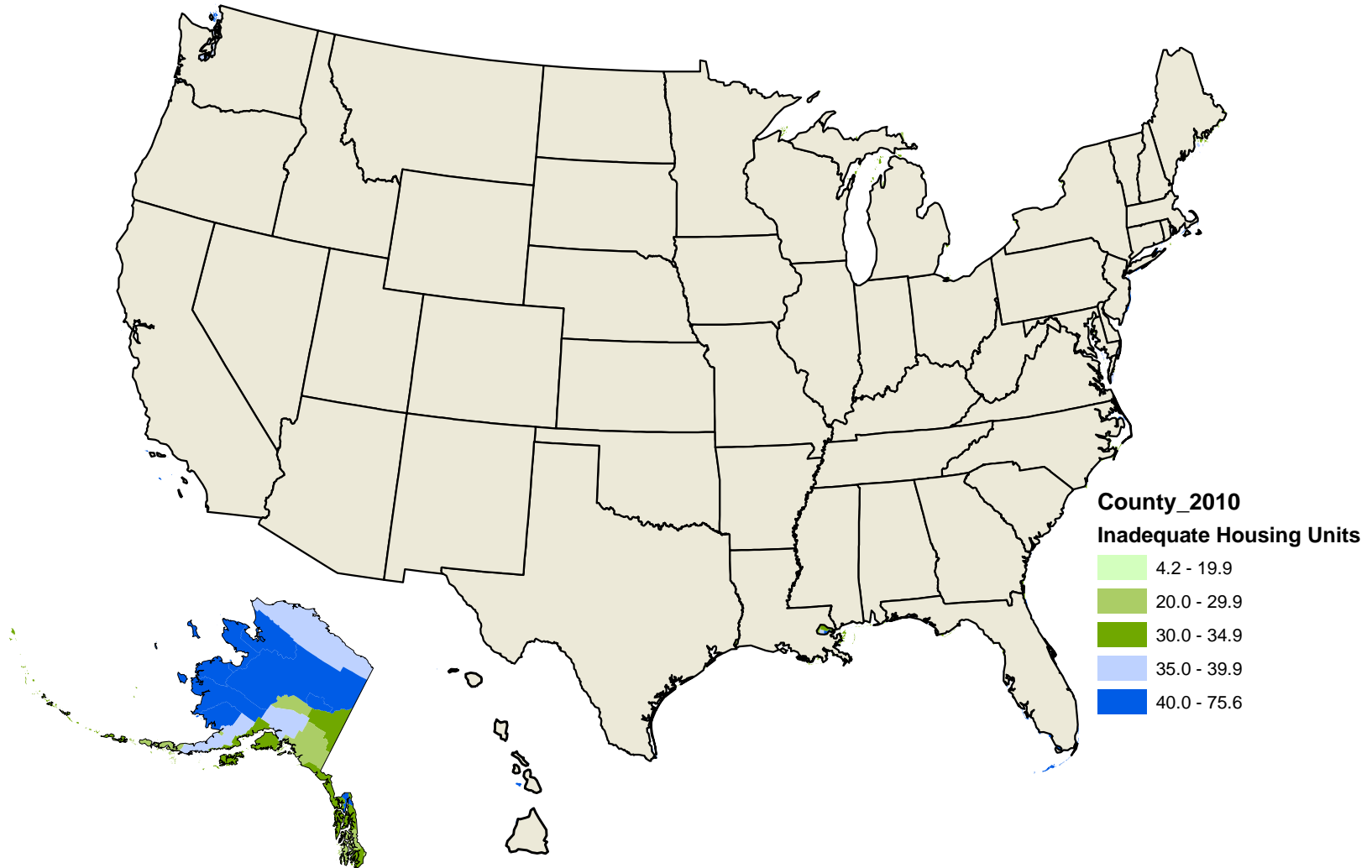
Inadequate Housing Units by Location, 2012



HAC Tabulations of 2008-2012 American Community Survey Data

Inadequate Housing Units, 2012

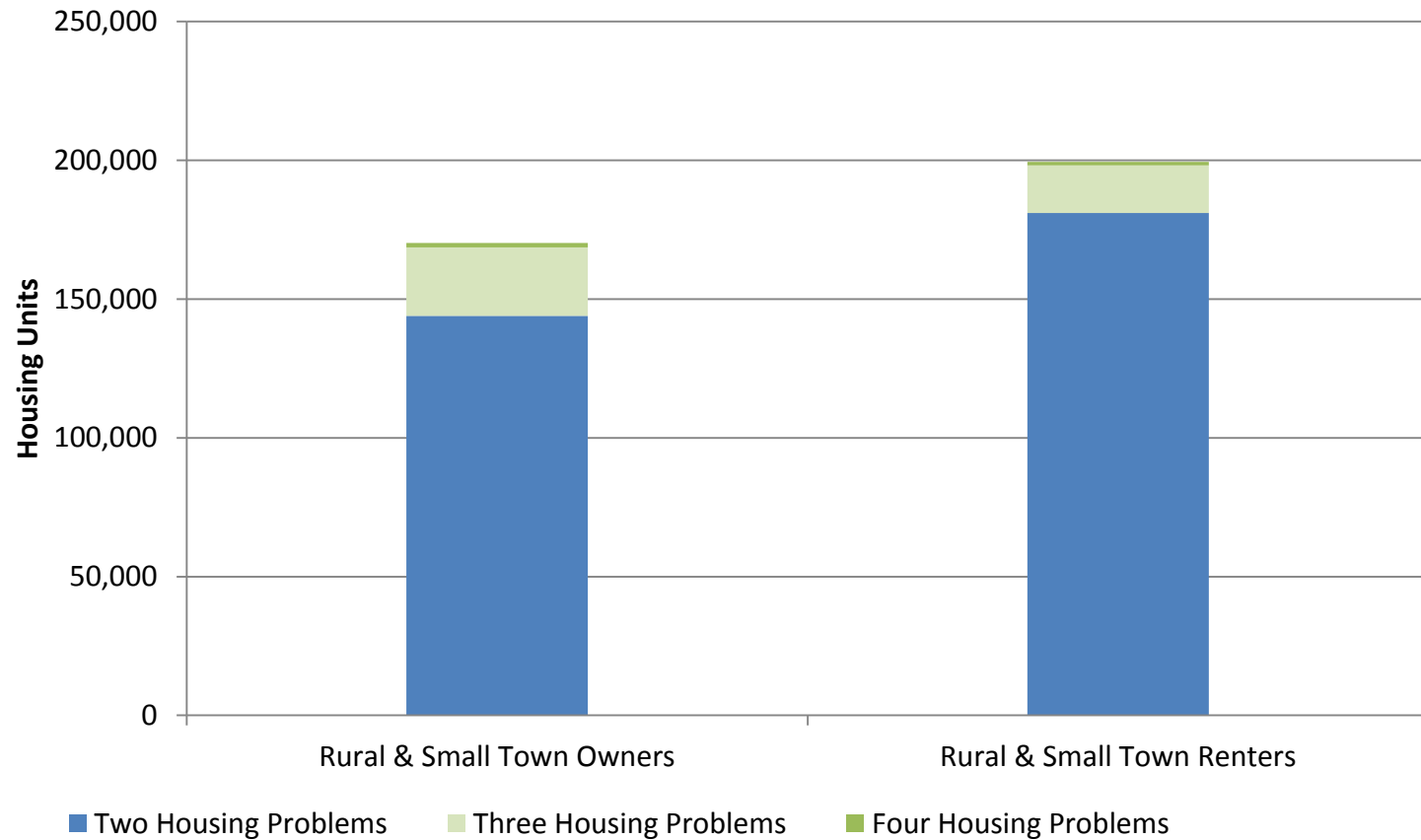
Occupied Housing Units With One or More Problems Related to Quality, Affordability, or Crowding



Source: HAC Tabulations of 2008-2012 American Community Survey

Produced by the Housing Assistance Council
Washington, DC

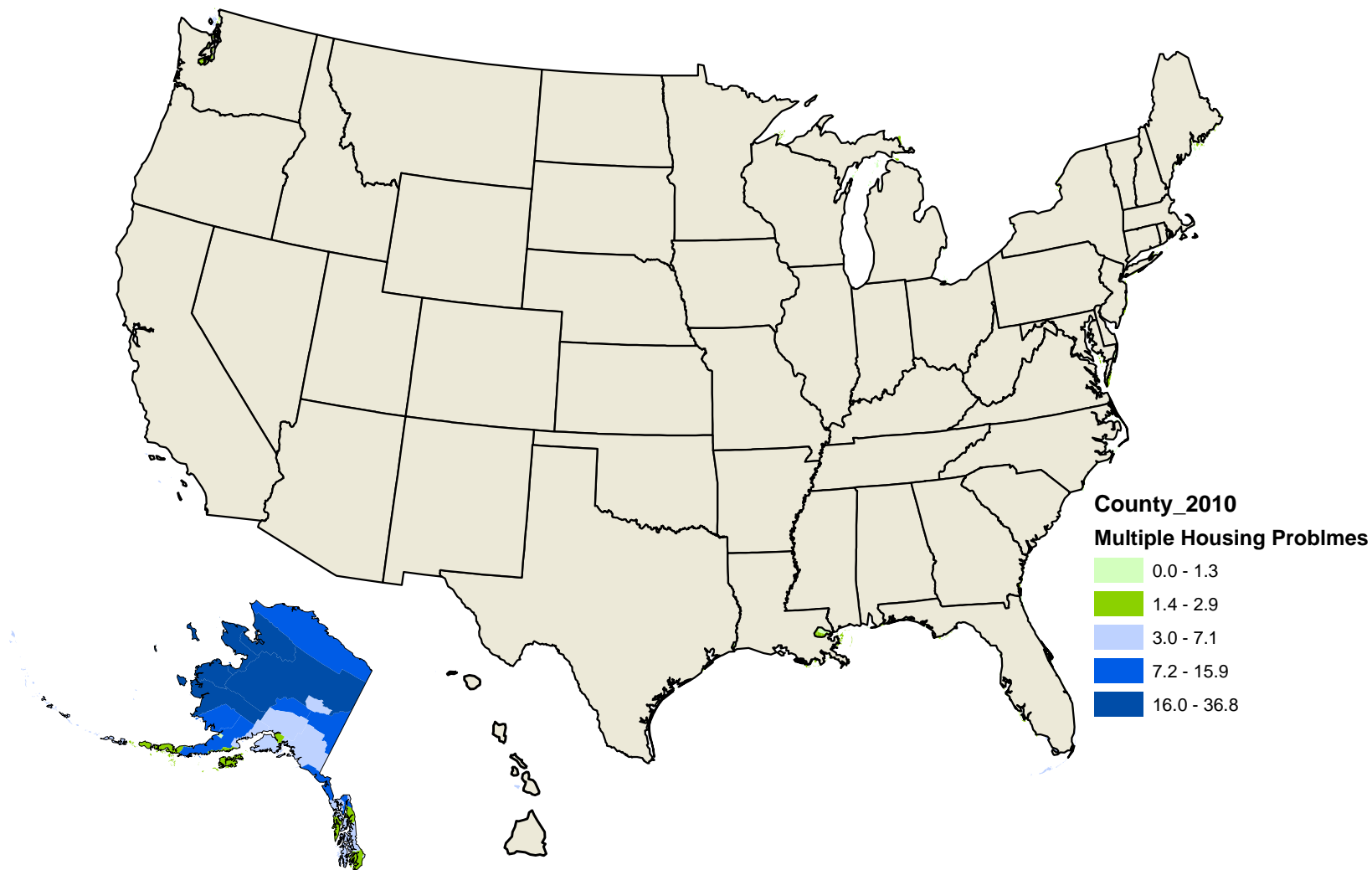
Multiple Housing Problems – Rural & Small Town Areas, 2012



HAC Tabulations of 2008-2012 American Community Survey Data

Multiple Housing Problems, 2012

Occupied Housing Units With One or More Problems Related to Quality, Affordability, or Crowding



Source: HAC Tabulations of 2008-2012 American Community Survey

Produced by the Housing Assistance Council
Washington, DC

Discussion



Discussion

- Value of a composite measure of housing adequacy?
- Reliability of data
- Technical concerns/issues
- ???

Resources



The Rural Data Portal

TAKING STOCK OF PEOPLE, POVERTY, AND HOUSING
IN YOUR COMMUNITY



HAC
Housing Assistance Council

[Get Data](#)[About the Data](#)[Maps](#)[Other Data Resources](#)[About HAC](#)[Help/FAQ](#)

GET DETAILED DATA

1. SELECT A GEOGRAPHY



National



State



County

☒ All Areas

☐ Rural

☐ Suburban

☐ Urban

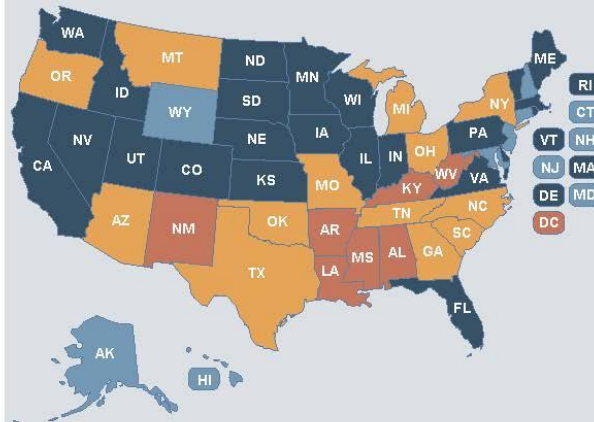
2. SELECT AN INDICATOR

- ☐ Demographic Data
- ☐ Social Data
- ☐ Economic Data
- ☐ Housing Data
- ☐ Housing Finance Data

Get Report

INTERACTIVE MAP QUICK DATA SNAPSHOTS

Rollover to see states data, or click on states to see county-level data.



POVERTY RATES

Population in Poverty (Percent)

0.0-9.9

10.0-13.9

14.0-16.9

17.0-21.2

About The Rural Data Portal

The RURAL DATA PORTAL is a simple, easy to use, on-line resource that provides essential information on the social, economic, and housing characteristics of communities in the United States. The RURAL DATA PORTAL is targeted toward rural communities, but a wide range of information is presented for the nation, states, and counties for rural, suburban and urban areas.

Most of the information provided in the RURAL DATA PORTAL come from Housing Assistance Council (HAC) tabulations of various public use data sets such as the 2010 Census of Population and Housing, the American Community Survey (ACS) and Home Mortgage Disclosure Act Data.

The Housing Assistance Council (HAC) is a national nonprofit organization that supports affordable housing efforts in rural areas of the United States.

For a detailed analysis of rural housing conditions download
HAC'S TAKING STOCK Report & Maps

The Rural Data Portal

TAKING STOCK OF PEOPLE, POVERTY, AND HOUSING
IN YOUR COMMUNITY



BEST IN CLASS

[Get Data](#)[About the Data](#)[Maps](#)[Other Data Resources](#)[About HAC](#)[Help/FAQ](#)

GET DETAILED DATA

1. SELECT A GEOGRAPHY



National



State



County

☒ All Areas

☐ Rural

☐ Suburban

☐ Urban

2. SELECT AN INDICATOR

☐ Demographic Data

☐ Social Data

☒ Economic Data

☐ Housing Data

☐ Housing Finance Data

☒ All

☐ Employment

☐ Occupation

☐ Class Of Worker

☐ Industry

☐ Household Income

☐ Earnings

☐ Individual Poverty Status

☐ Family Poverty Status

Get Report

INTERACTIVE MAP QUICK DATA SNAPSHOTS

Rollover to see states data, or click on states to see county-level data.



About The Rural Data Portal

The RURAL DATA PORTAL is a simple, easy to use, on-line resource that provides essential information on the social, economic, and housing characteristics of communities in the United States. The RURAL DATA PORTAL is targeted toward rural communities, but a wide range of information is presented for the nation, states, and counties for rural, suburban

Details

Add ▾

Edit

Basemap

Share

Print

Layers

Full Screen

Find address or place

Q

