

USING ACS DATA TO PREPARE FOR AFFORDABLE CARE ACT IMPLEMENTATION

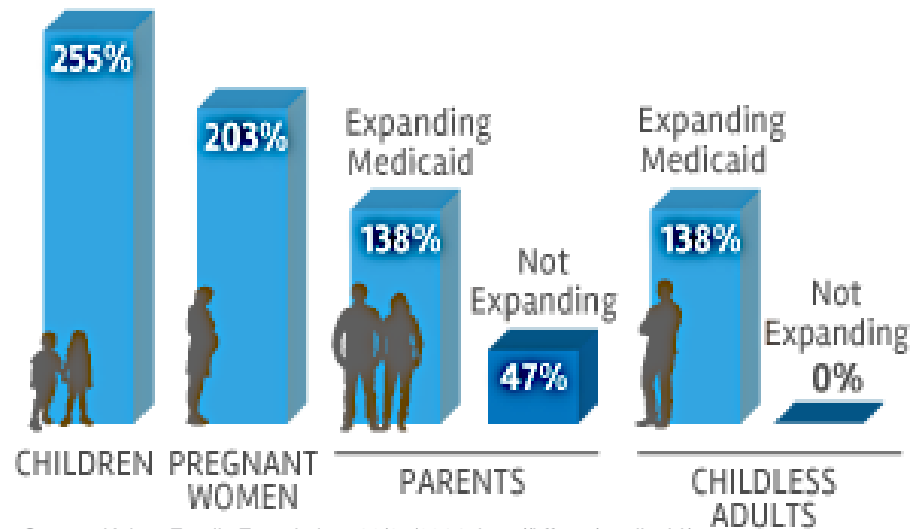
MEDICAID EXPANSION
IN SAN DIEGO COUNTY



SAN DIEGO

THE AFFORDABLE CARE ACT EXPANDS MEDICAID

138%
FEDERAL
POVERTY
LEVEL



Source: Kaiser Family Foundation. 02/05/2014. <http://kff.org/medicaid/>

HOW MANY PEOPLE...

ARE *NEWLY ELIGIBLE* FOR
ACA EXPANDED MEDI-CAL

*ARE NEWLY ELIGIBLE
& UNINSURED*

WILL APPLY FOR MEDI-
CAL DURING 2013-14
OPEN ENROLLMENT

...IN SAN DIEGO COUNTY?

TABLES B27016, C27016, & S2701



2012 ACS ESTIMATES

3,073,012

San Diego County Population

521,386

Uninsured

224,920

Uninsured & Medi-Cal Eligible

174,297

Uninsured & Newly Eligible

106,321

The 61% Likely to Apply

2012 ACS ESTIMATES

3,073,012
San Diego County Population



521,386

Uninsured

224,920

Uninsured & Medi-Cal Eligible

174,297

Uninsured & Newly Eligible

106,321

The 61% Likely to Apply

2012 ACS ESTIMATES

3,073,012
San Diego County Population



521,386
Uninsured

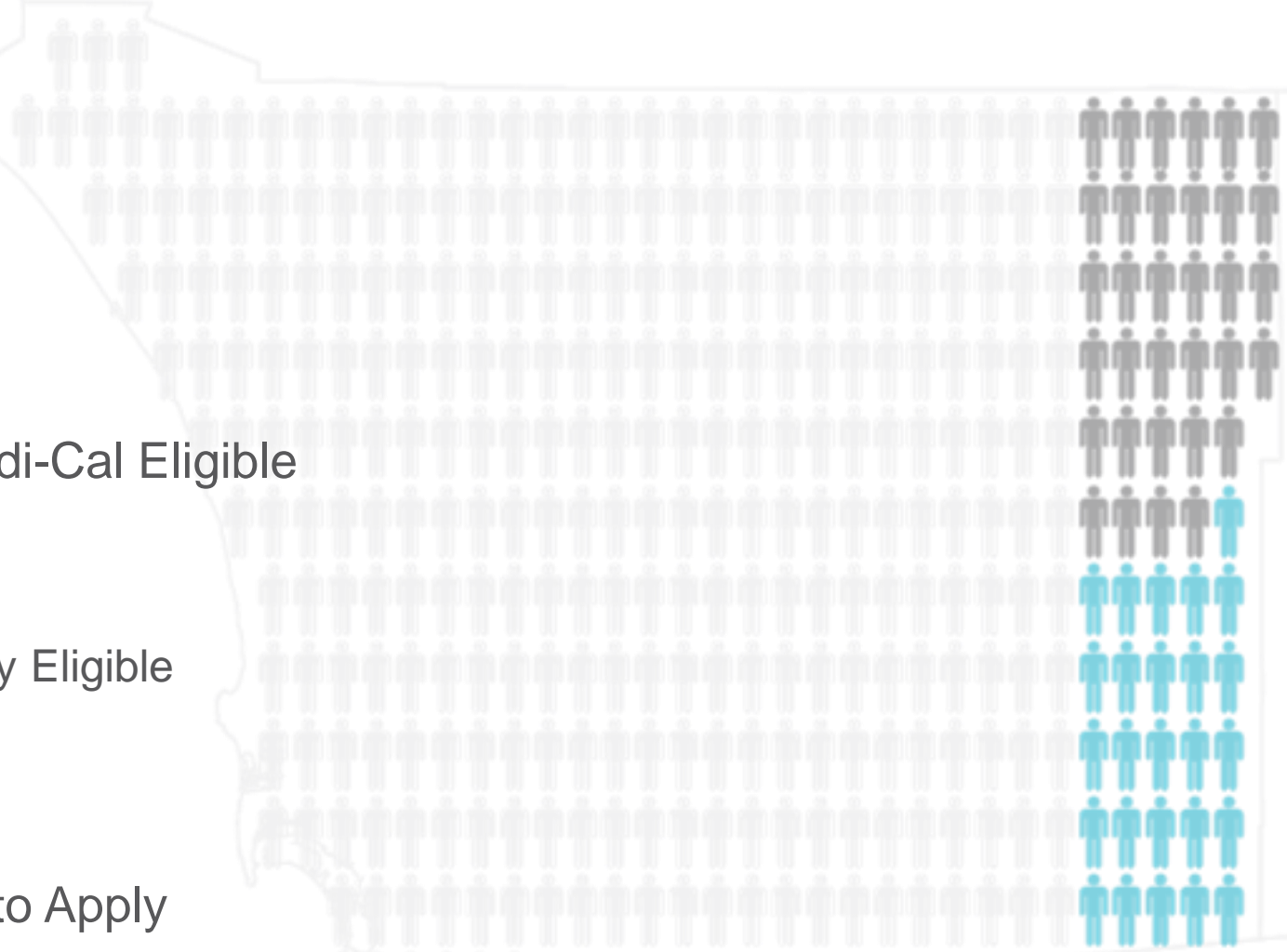


224,920

Uninsured & Medi-Cal Eligible

174,297
Uninsured & Newly Eligible

106,321
The 61% Likely to Apply



2012 ACS ESTIMATES

3,073,012
San Diego County Population



521,386
Uninsured

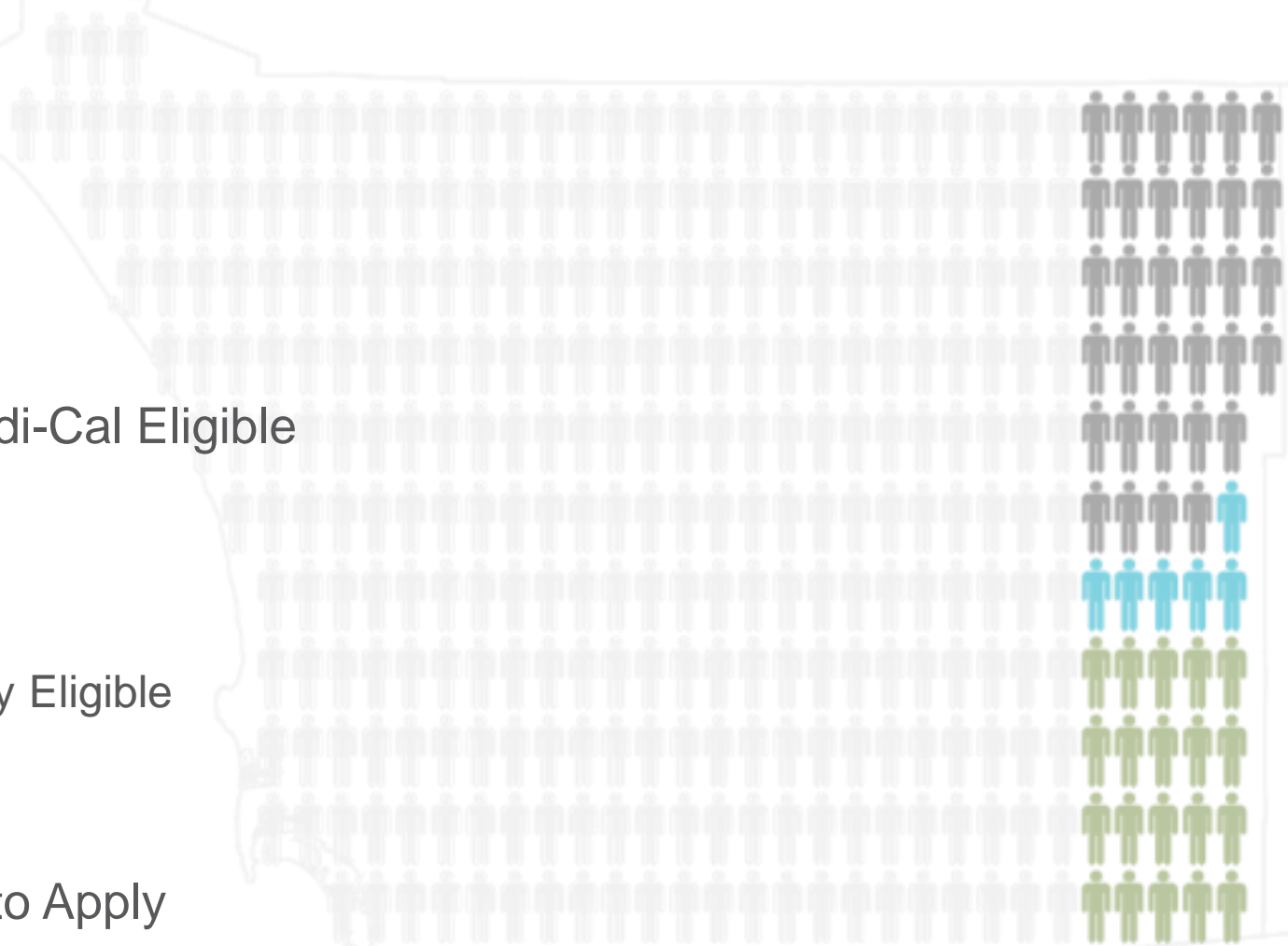


224,920
Uninsured & Medi-Cal Eligible



174,297
Uninsured & Newly Eligible

106,321
The 61% Likely to Apply



2012 ACS ESTIMATES

3,073,012
San Diego County Population



521,386
Uninsured



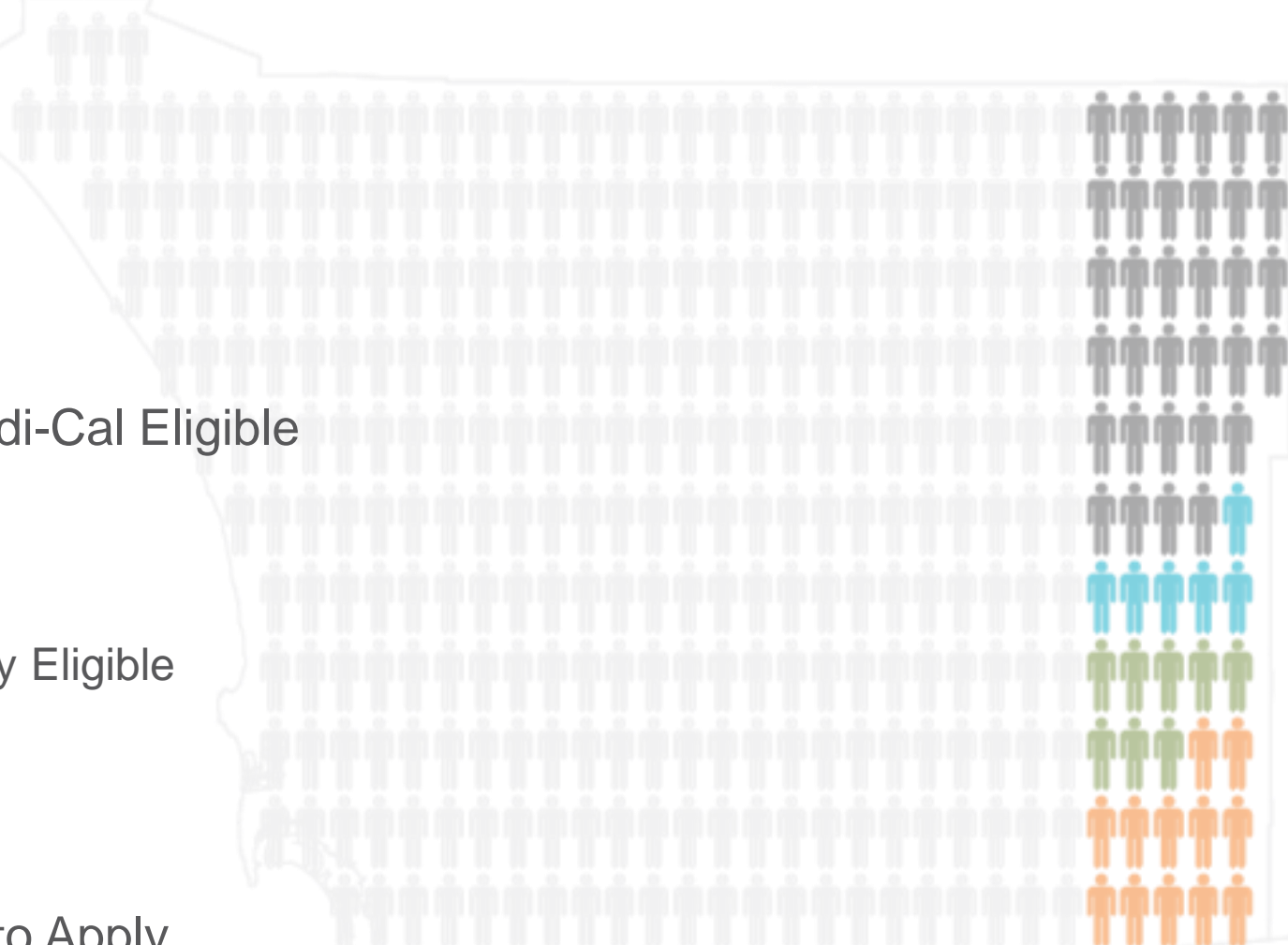
224,920
Uninsured & Medi-Cal Eligible



174,297
Uninsured & Newly Eligible



106,321
The 61% Likely to Apply



Source: U.S. Census Bureau, 2012 American Community Survey, Table C27016. (106,321 +/- 8,791 margin of error).

Lucia, Jacobs, et al. *Medi-Cal Expansion under the Affordable Care Act: Significant Increase in Coverage with Minimal Increase in Cost to the State*. January 2013.

2012 ACS ESTIMATES

3,073,012
San Diego County Population



521,386
Uninsured



224,920
Uninsured & Medi-Cal Eligible



174,297
Uninsured & Newly Eligible



106,321
The 61% Likely to Apply

324,031

Newly Eligible



**COVERED
CALIFORNIA**

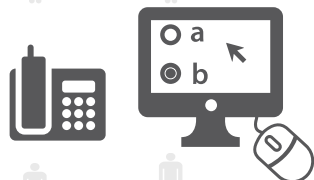
→ Private Provider

→ **106,321**

Medi-Cal Applicants

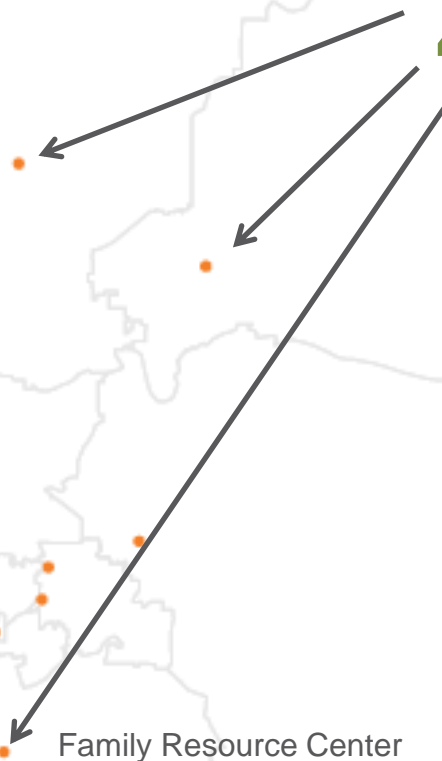
↓
Applications
processed by

ZIP code



521,386

Uninsured San Diegans



Family Resource Center

Medi-Cal Processing

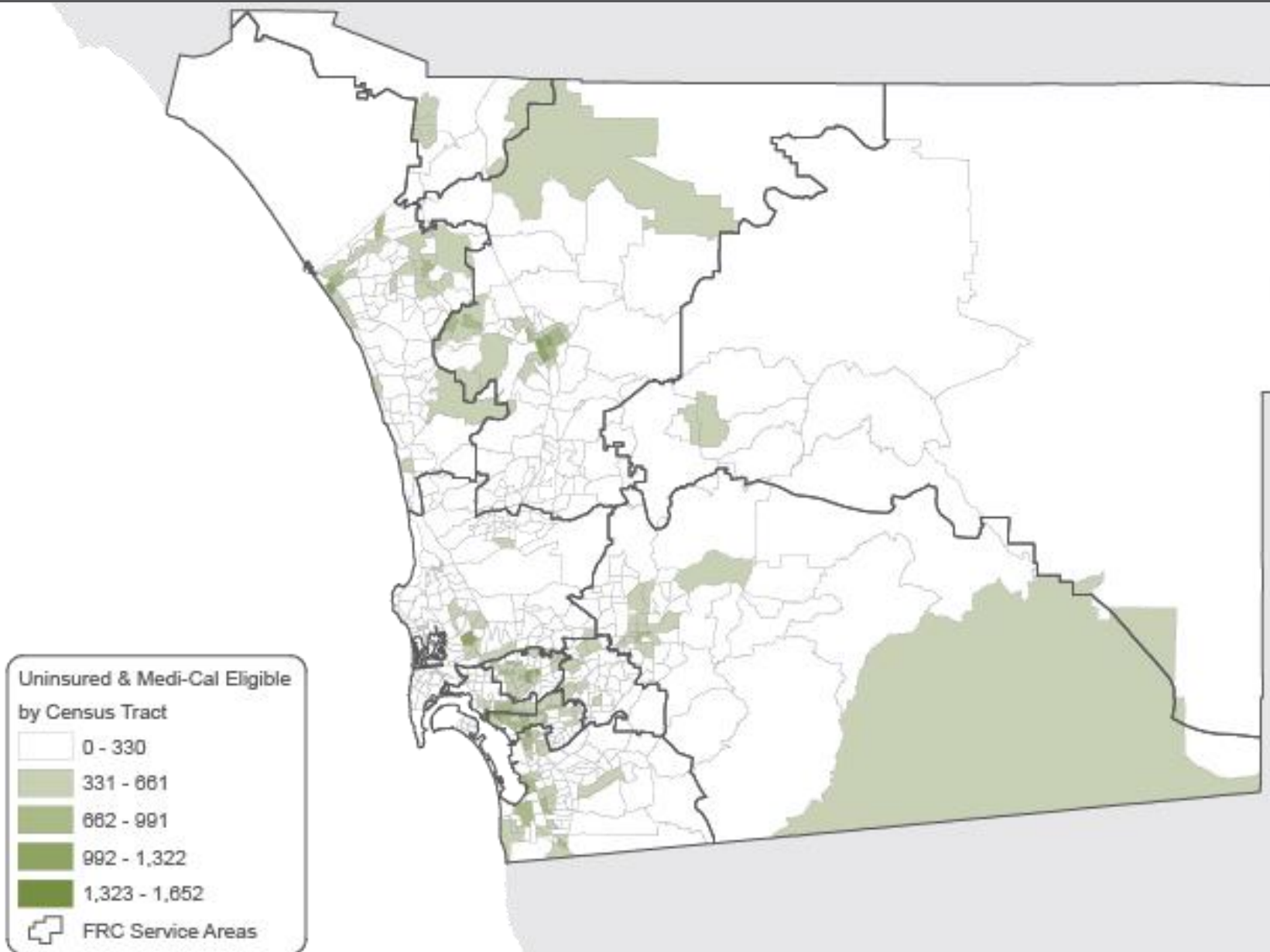
PREPARING FOR MEDI-CAL EXPANSION

HOW MANY STAFF SHOULD BE
HIRED TO PROCESS MEDI-
CAL APPLICATIONS?

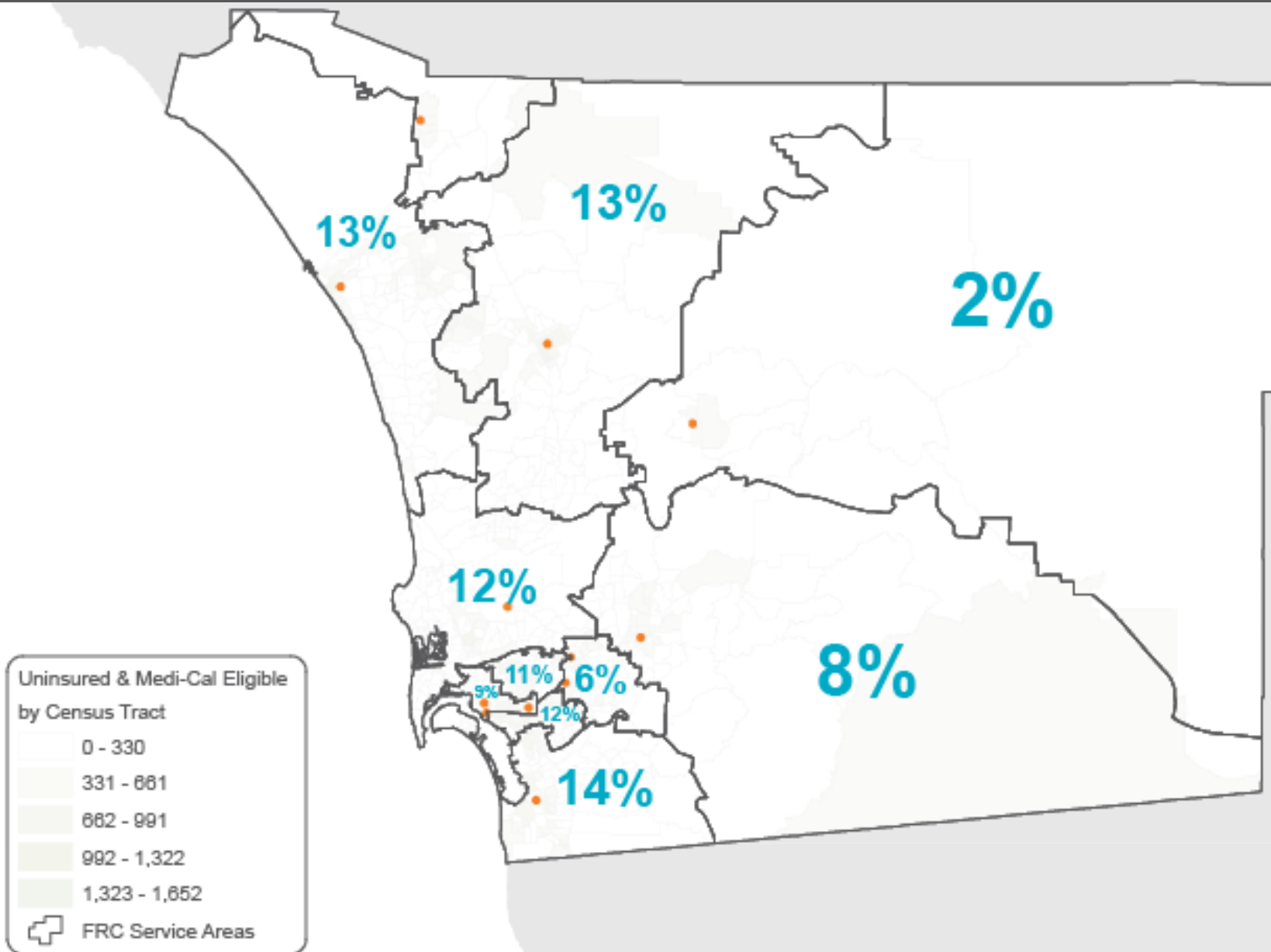
WHERE SHOULD THESE
STAFF BE ALLOCATED?

WHERE SHOULD TWO
NEW *FAMILY RESOURCE*
CENTERS BE LOCATED?

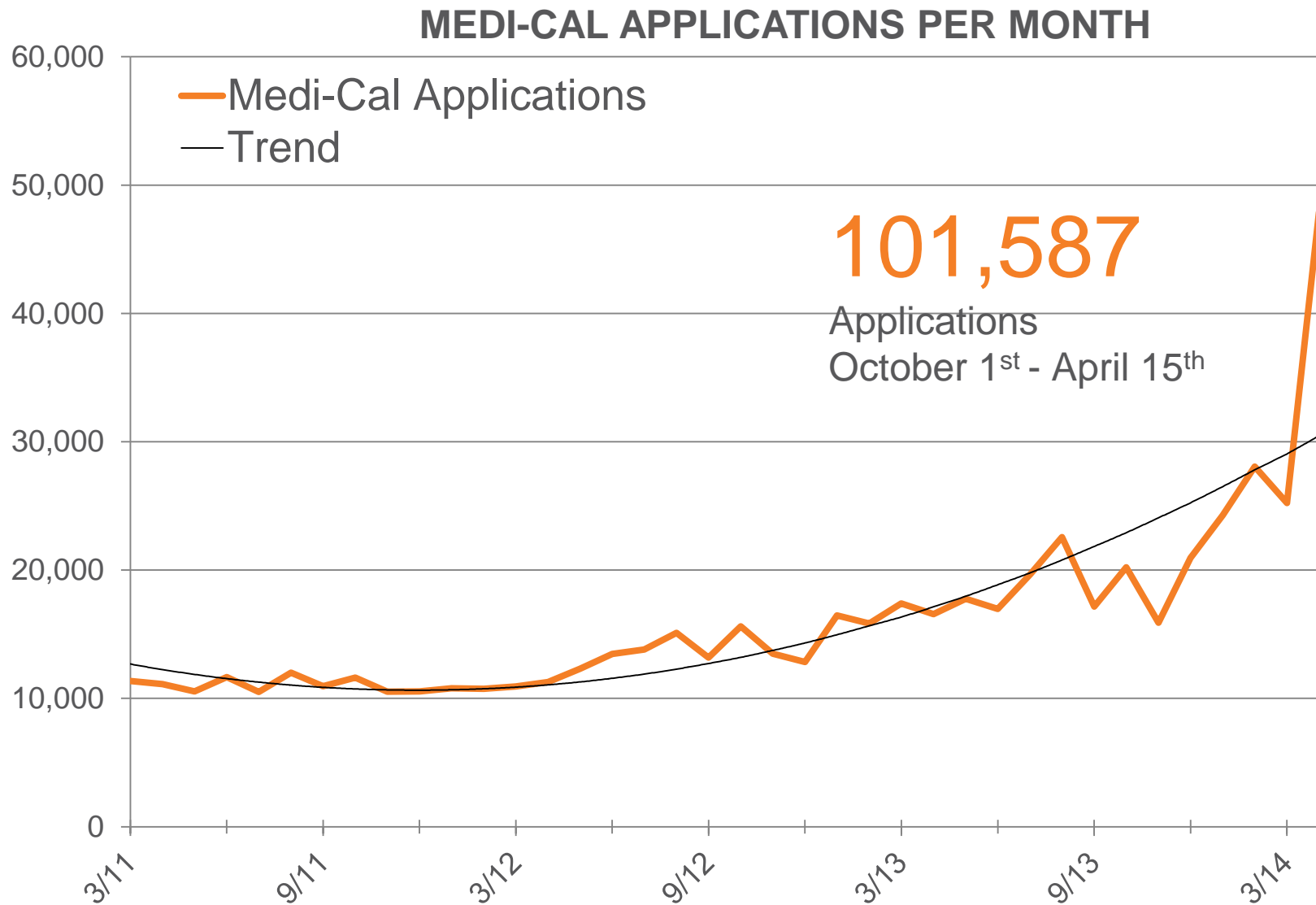
WHERE TO ALLOCATE 221 NEW STAFF?



WHERE TO ALLOCATE 221 NEW STAFF?

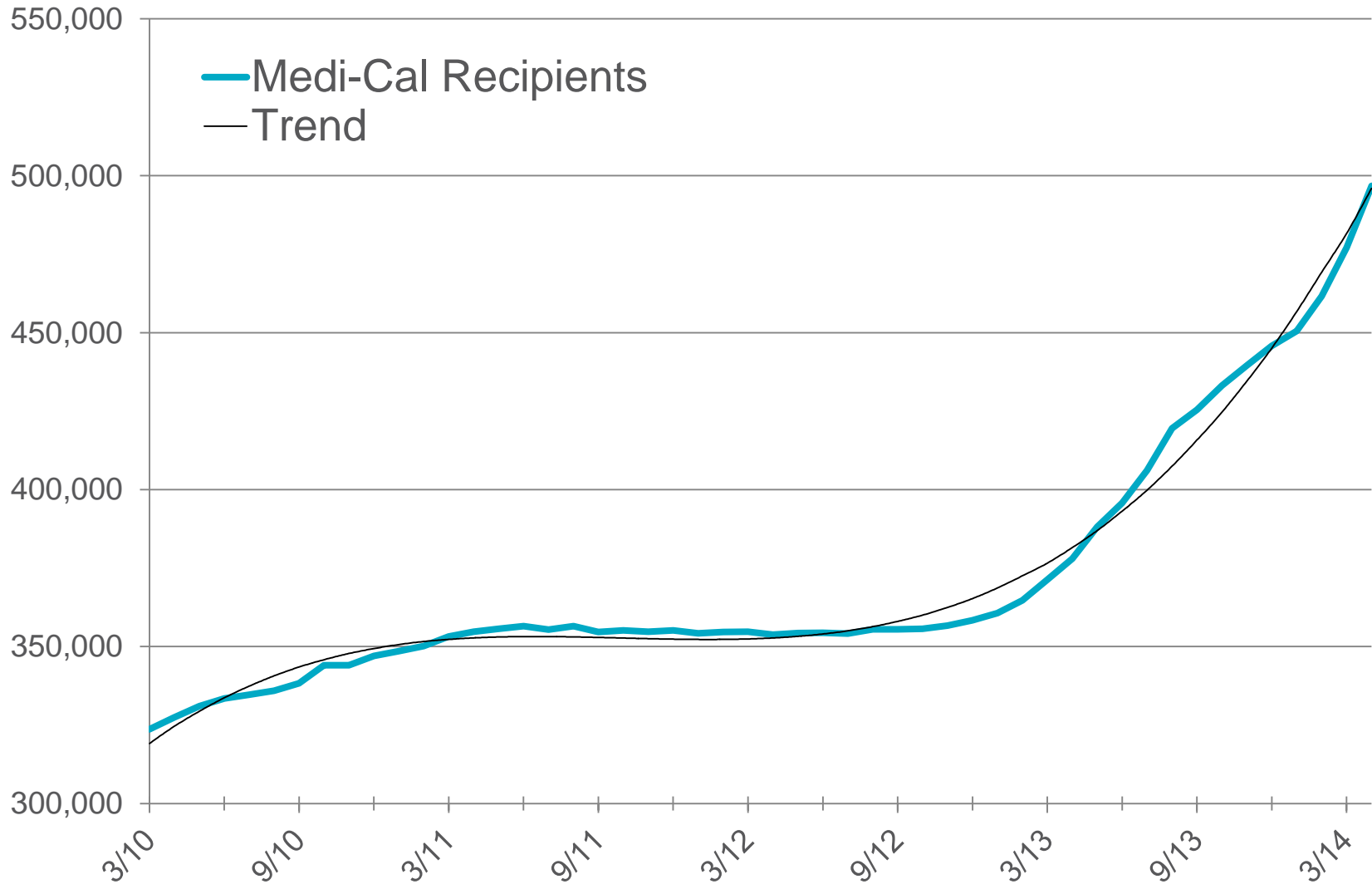


2013-2014 ACA OPEN ENROLLMENT NUMBERS

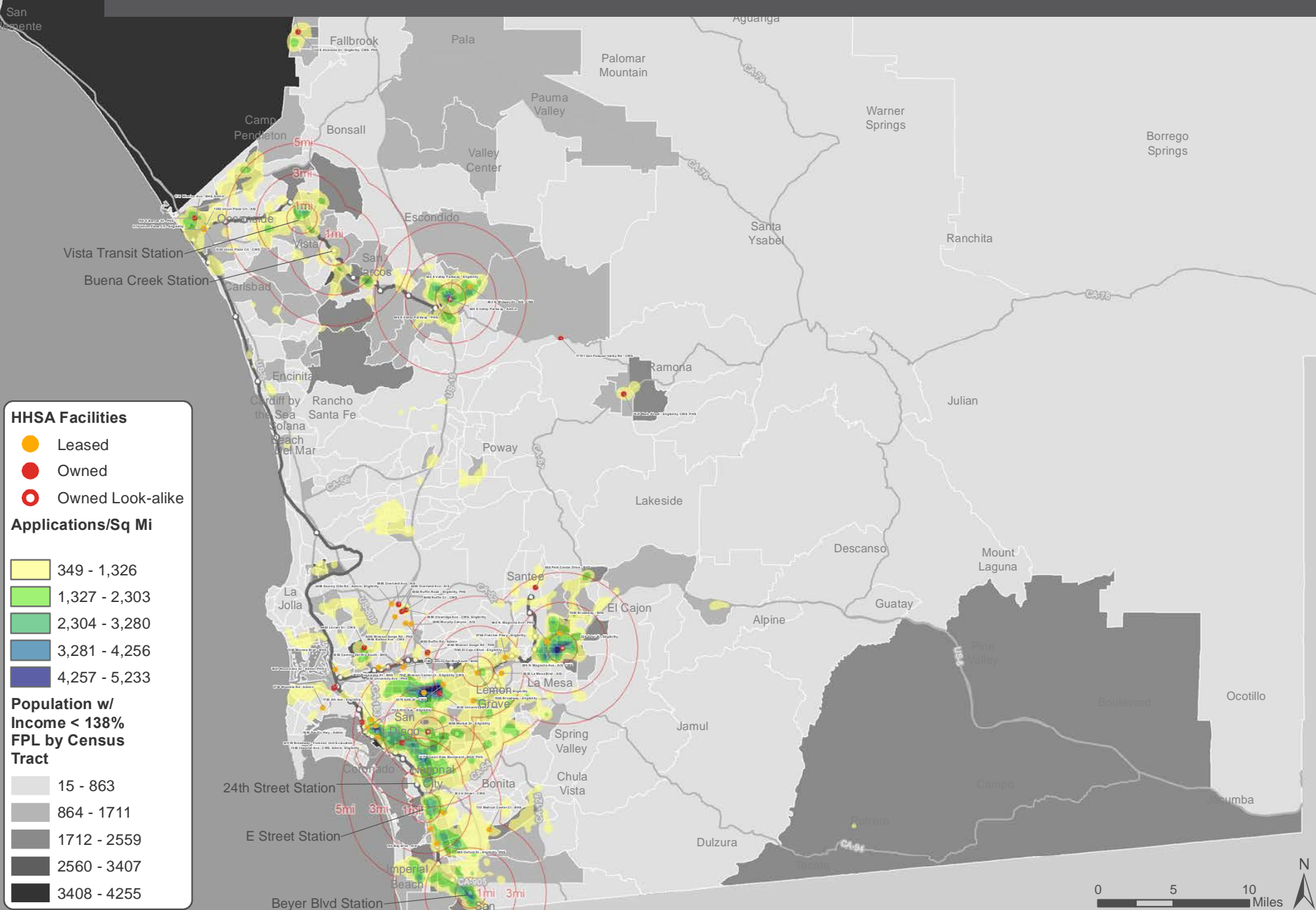


2013-2014 ACA OPEN ENROLLMENT NUMBERS

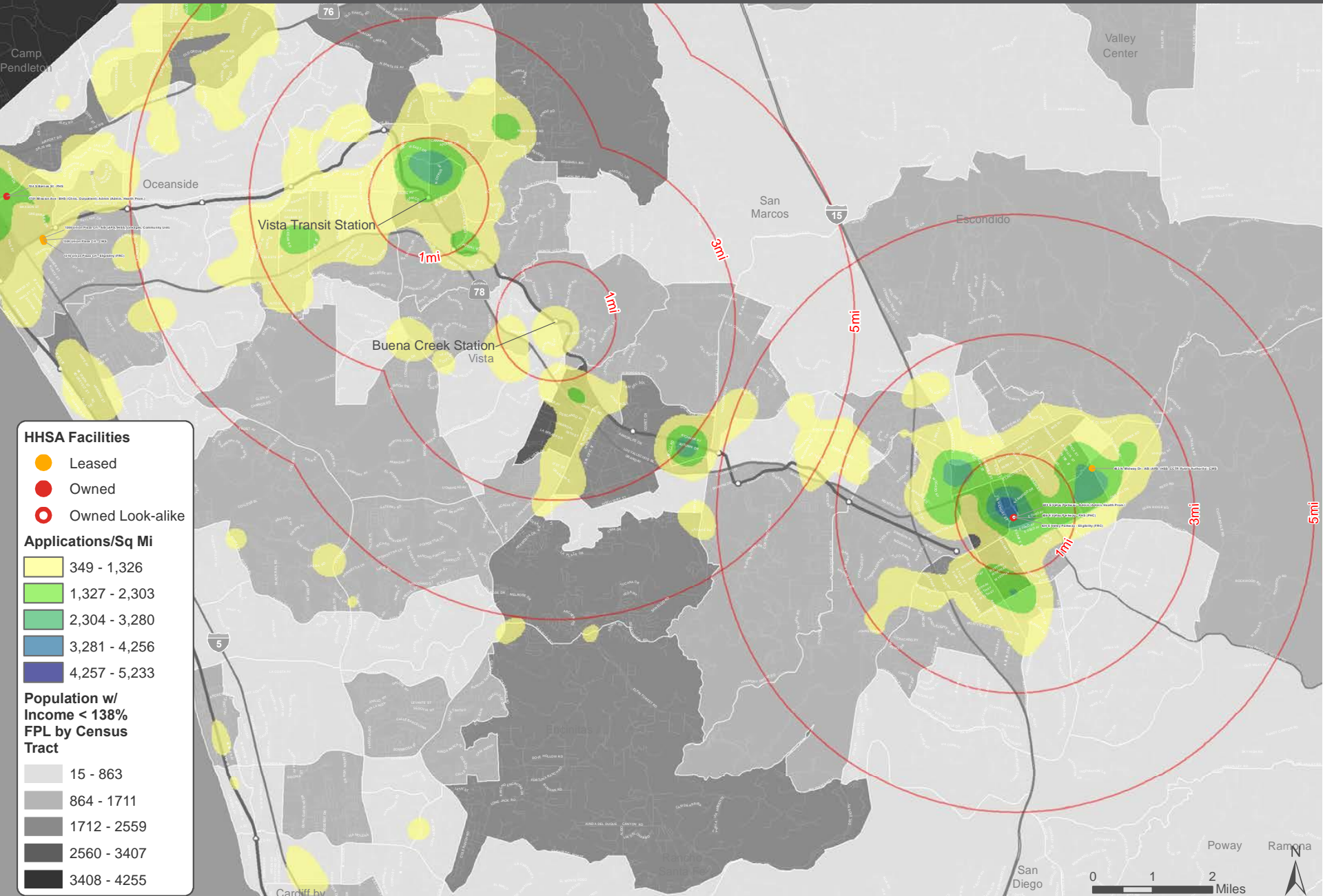
ACTIVE MEDI-CAL RECIPIENTS BY MONTH



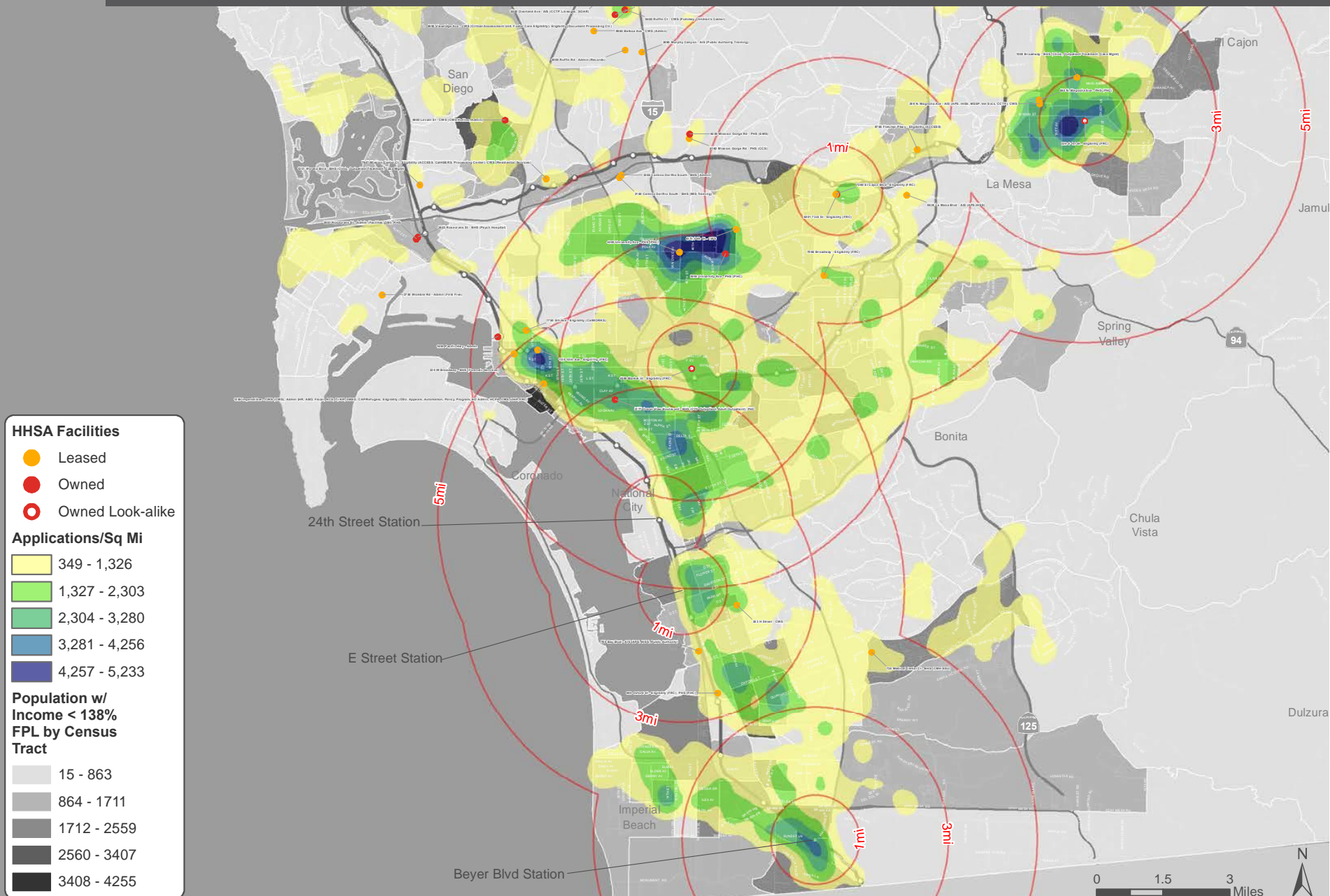
PLANNING NEW FAMILY RESOURCE CENTERS



PLANNING NEW FAMILY RESOURCE CENTERS



PLANNING NEW FAMILY RESOURCE CENTERS



RICARDO GUTIERREZ

ricardo.gutierrez@sdcounty.ca.gov



SAN DIEGO