

**Gregg Bell, PhD**  
**SDC Steering Committee**  
**Institute for Rural Health Research**  
**The University of Alabama**

**ACS Users Group**  
Alexandria, VA



# Census Bureau Mission Statement

The Census Bureau serves as the leading source of quality data about the nation's people and economy. We honor privacy, protect confidentiality, share our expertise globally, and conduct our work openly. We are guided on this mission by our strong and capable workforce, our readiness to innovate, and our abiding commitment to our customers.



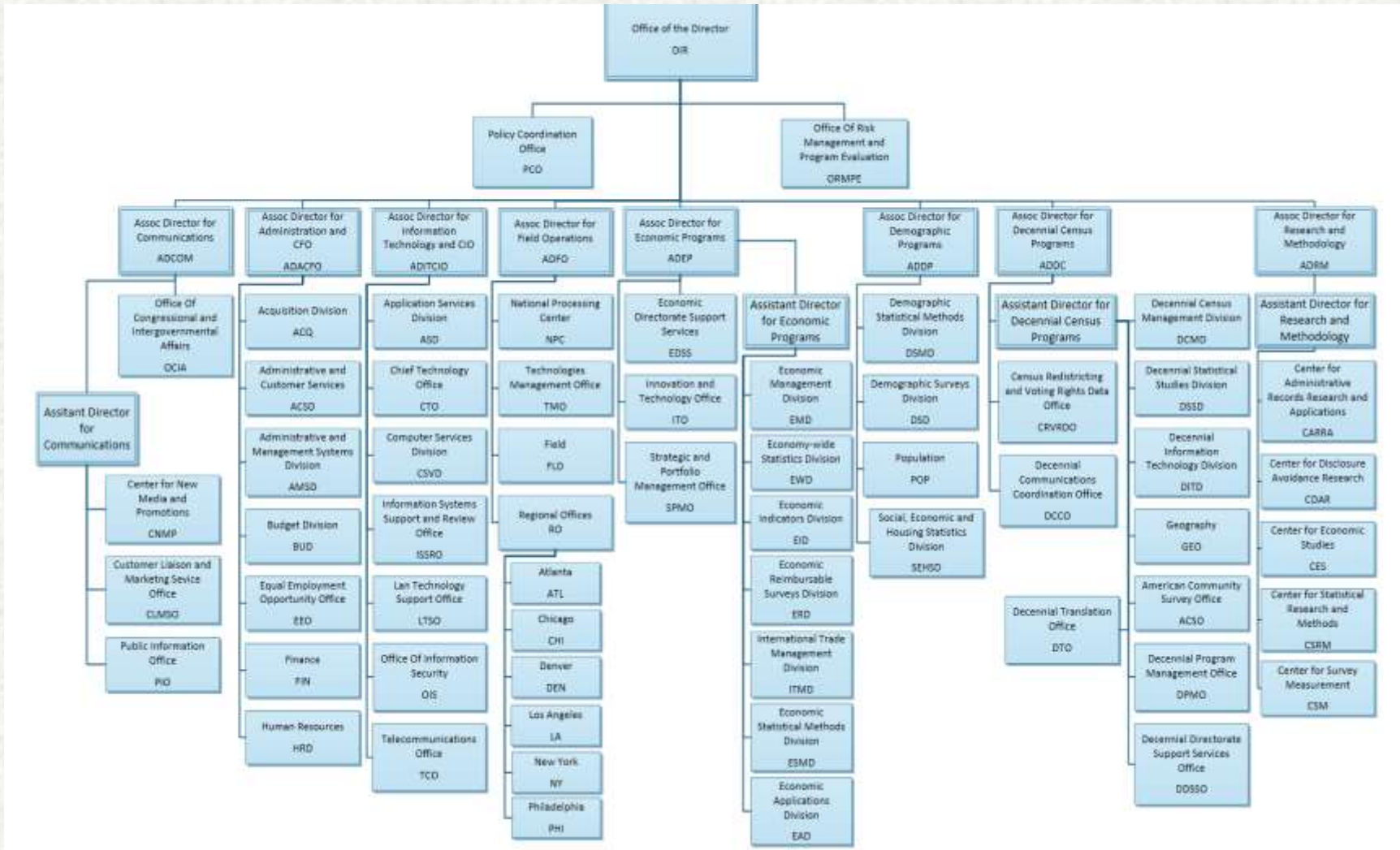
# Some Census Bureau Directorates

## Associate Directorates

1. Communications
2. 2020 Census
3. Research and Methodology
4. Administration and Finance
5. Information Technology
6. Field Operations (Including Regional Offices)
7. Economic Programs (Including Governments)
8. Decennial Census (including Geography)
9. Demographic Programs



# The Census Bureau



# State Data Center History

- Began in 1978 with just a few states.
- Repository for Census data
- Each State SDC was created by the Governor's Liaison in each state
- Often located at research universities, libraries, state government, etc.



# State Data Center Mission Statement

Empower data users with understandable, accurate, and timely information through the mutually beneficial partnership between the State Data Centers (SDCs) and the Census Bureau.



# State Data Center Network

- 56 Lead Data Centers
  - 9 Person Steering Committee
    - Each elected to a three-year term
    - Allowed to serve two consecutive terms before rotating off
  - 225 Coordinating Agencies
    - The number of coordinating agencies is determined by the lead; usually 1-3 per state
  - 1,400 Affiliates
    - Each state has a number of affiliates commensurate with their states population



# The State Data Center Program is a...

- Partnership between the Census Bureau and the states
- Network of data professionals who provide data assistance, training, and presentations
- Source of feedback about statistics, programs, data users' needs, and operational issues
- Premier local partner and an official source of Census Bureau data





Lead organizations and their networks...

Provide staff and budget to  
support the objectives of the  
program.



# Data Dissemination is What We Do

The SDC network disseminates Census data and provides guidance, tools, technology, and expertise to local stakeholders.



# Consultation

Most services are provided free of charge.



# Training and Education

- Lead agencies and/or network members:
  - Conduct training for local data users
  - Give presentations to local groups
  - Host an annual meeting and training conference.
    - Ask for an invitation!



## Advisory Role

The SDC network participates in the design, input and testing of products, programs, technologies and services.



# Census Bureau Support

SDC Leads or their delegates participate in the annual meeting at The Census Bureau.



# State Data Center Resources

SDCs have:

- Embargo access
- Training
- Access to subject-matter experts
- Full-time staff
- Notifications from the Bureau



# How to contact a Specific SDC

- Search “census state data center network”
- <https://www.census.gov/about/partners/sdc/member-network.html>
- Click on “Member Network”





## State Data Center (SDC) Program

About this Section

Events

**Member Network**

Partner Resources

Special Projects

Related Sites

Contact Us

### Member Network



The SDC lead agencies organize a statewide network of coordinating and affiliate agencies. This network works in partnership with the Census Bureau through the Data Users Branch (DUB) and the Census Bureau's Regional Offices for data dissemination at the local level.

2017 - 2018 Steering Committee

#### Select by State or Island Area:

[Alabama](#)

[Alaska](#)

[Arizona](#)

[Arkansas](#)

[California](#)

[Maine](#)

[Maryland](#)

[Massachusetts](#)

[Michigan](#)

[Minnesota](#)

[Pennsylvania](#)

[Rhode Island](#)

[South Carolina](#)

[South Dakota](#)

[Tennessee](#)



College of  
Community  
Health Sciences

# State Data Center Clearinghouse

<https://sdcclearinghouse.com/>



The screenshot shows the homepage of the State Data Center Clearinghouse. At the top, there is a banner with the SDC logo and the text "State Data Center (SDC) Clearinghouse". Below the banner is a navigation menu with links for "About", "Governance", "SDC Network Presentations", "SDC Products", "Training Materials", and "Listserv". The main content area is divided into two columns. The left column features an "About" section with the headline "1,800 agencies – Providing guidance and access to Census data." and a search bar. The right column contains a "Categories" section with links to "Events (13)", "Monthly Meeting Minutes (8)", "SDC Products (13)", "Sharing (28)", "Steering Committee (2)", and "Tips and Documentation (3)", as well as a "Tags" section with various search terms like "2020 Census ACS Area profiles and dashboards", "Calculator", "Census 2010", "Census user", "how-to and documentation", "Code", "Complete-count committees", "Data mapping tools", "Data query tools", "Data Downloadable datasets", "Elections Experts Frontpage", "Geography", "LJCA Presentations and outcomes", "PUMS Reports", "SAS SPSS", and "SDC Clearinghouse".



THE UNIVERSITY OF ALABAMA®

# Using the SDC's Supports the Census Bureau

- Every SDC submits an Annual Report of their activities
  - Data requests, training, presentations, etc.
- Used to Demonstrate Value of Census Activities



**Questions? Call Me!**

**Gregg Bell**

**205.348.1690**

**[gregg.bell@ua.edu](mailto:gregg.bell@ua.edu)**

