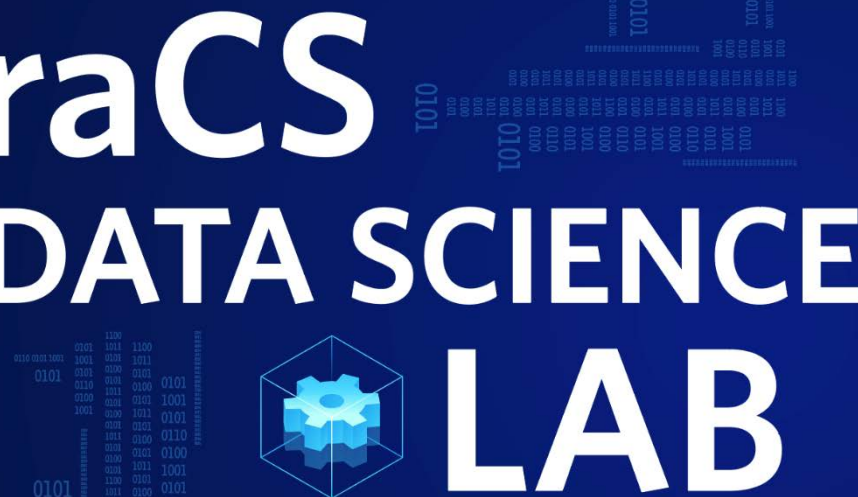




SCHOOL OF MEDICINE

North Carolina Translational and Clinical Sciences Institute

TraCS DATA SCIENCE LAB

A decorative graphic on the left side of the slide. It features a vertical column of binary code (0s and 1s) on the far left. To its right is a 3D wireframe cube containing a blue gear icon. Further right is another vertical column of binary code. The text "TraCS DATA SCIENCE LAB" is overlaid on this graphic.

Caring for Communities: Comparing Health Care System Patient Populations to Regional Populations

John P. Powers

Integrated hub of the Clinical and Translational Science Awards
(CTSA) at UNC-Chapel Hill

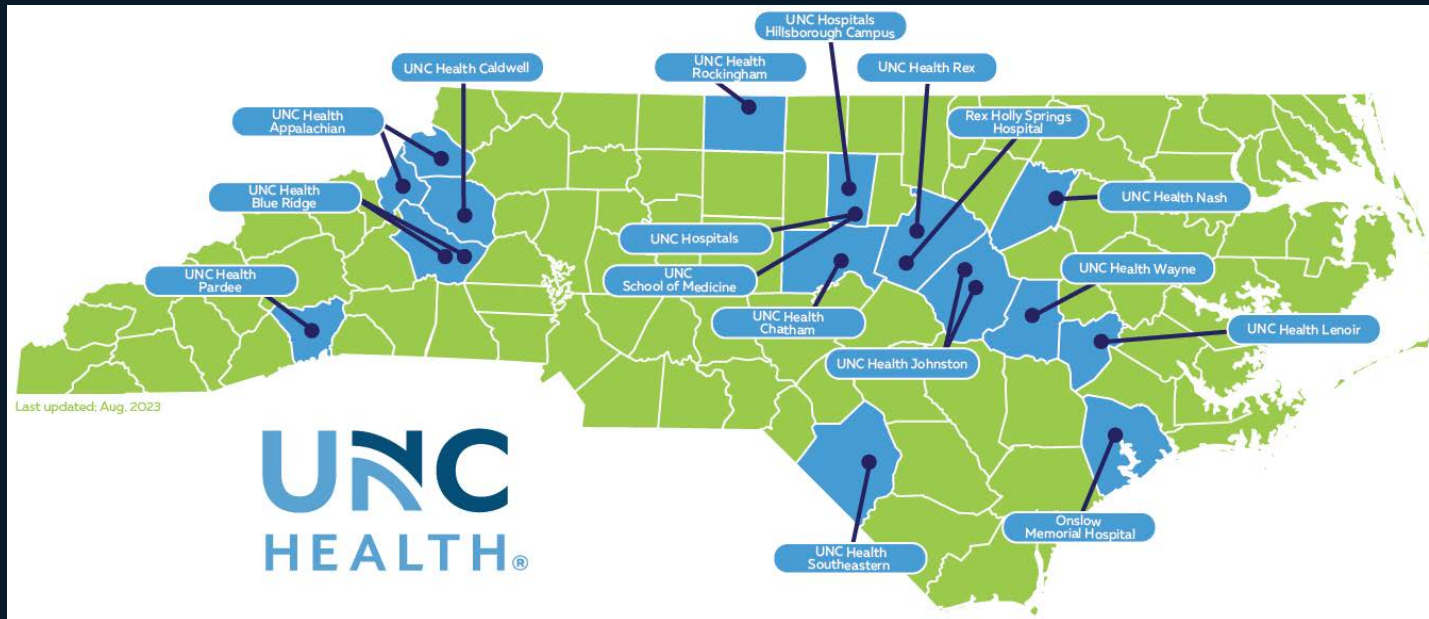
Project Team

University of North Carolina at Chapel Hill	U.S. Census Bureau	UNC Health Alliance
Timothy S. Carey	Aubrey Limburg	Amy Shaheen
Taylor W. Hargrove	Victoria Udalova	
Robert Bowers		
Emily R. Pfaff		
Barbara Entwisle		

Funding & Disclaimers

- Any opinions and conclusions expressed herein are those of the authors and do not represent the views of the U.S. Census Bureau.
- The project described was supported by the National Center for Advancing Translational Sciences (NCATS), National Institutes of Health, through Grant Award Number UM1TR004406. The content is solely the responsibility of the authors and does not necessarily represent the official views of the NIH.

The Rise of Population Health Care



- Large health care delivery systems growing in number and size
- Large electronic health data warehouses

Population health care and research

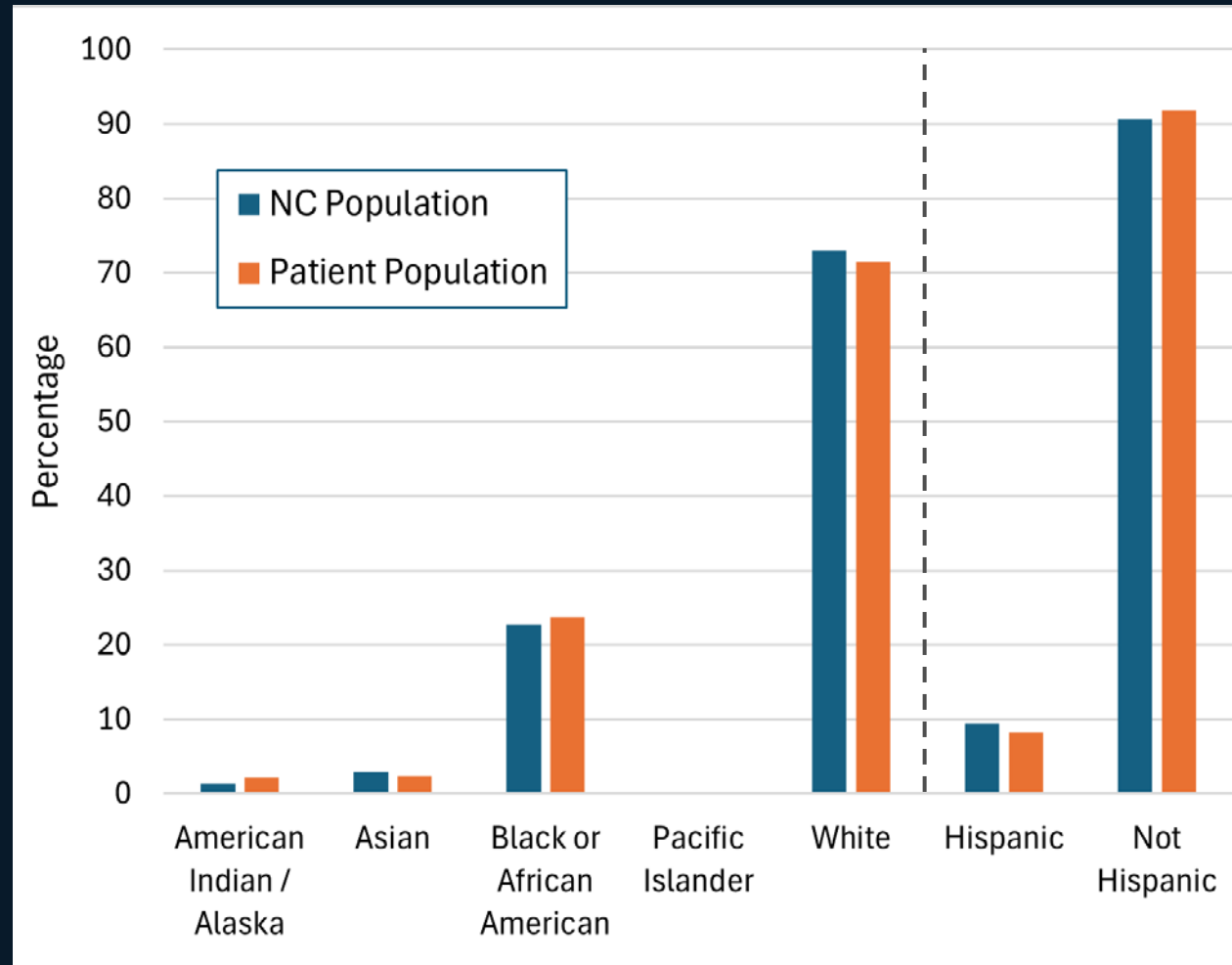
Open Questions

- What population is being cared for?
- Do the patients of large regional systems reflect the underlying regional population?
- Or are factors such as race, ethnicity, and social determinants of health (SDOH) associated with which residents ultimately receive care?

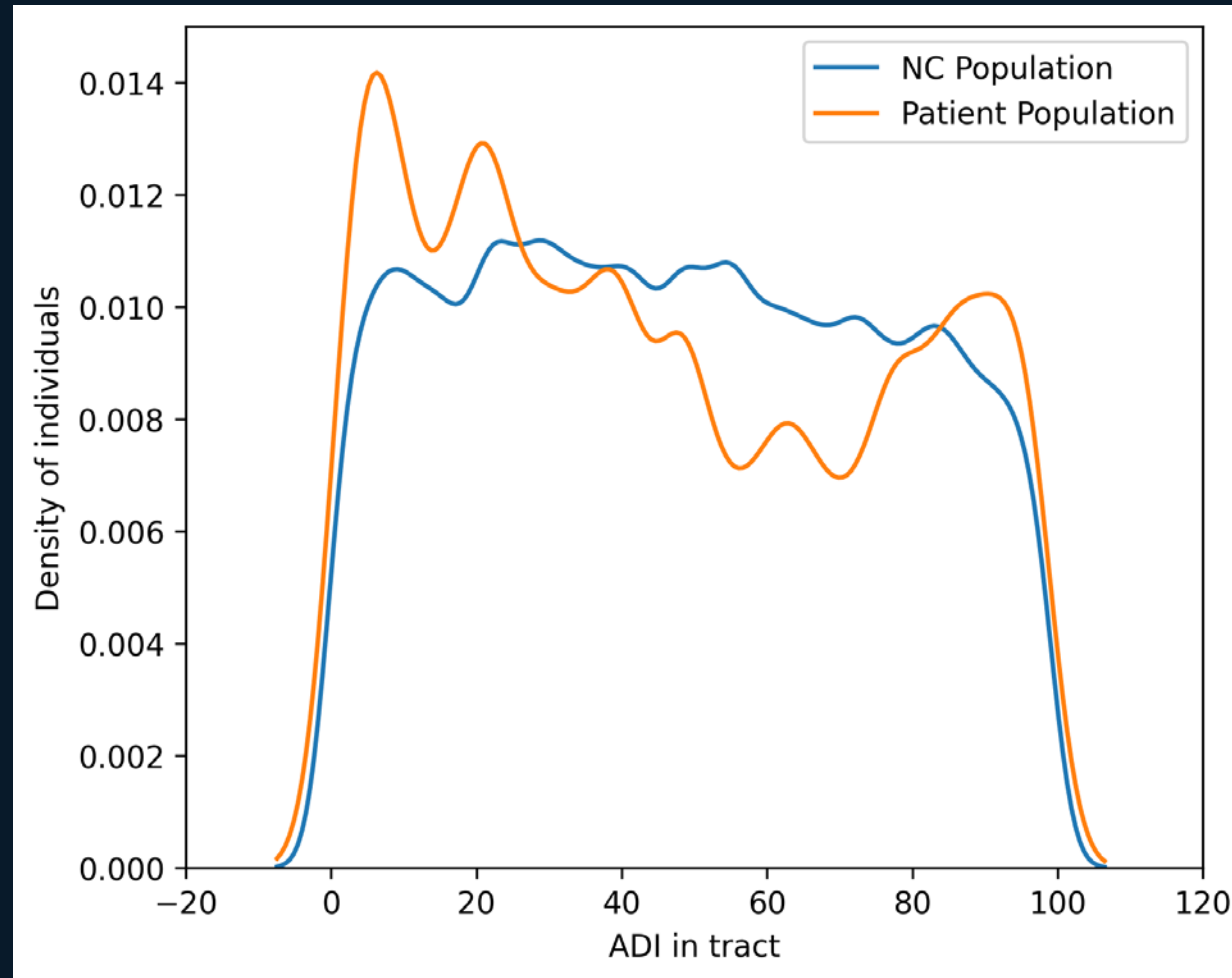


- Patient data from UNC Health
 - State-owned health care system focused on NC residents
 - Cares for ~20% of NC population
 - ~2.1 million patients from 2018-2022
- NC data from public 2015-2019 ACS 5-year estimates

Demographic Summary

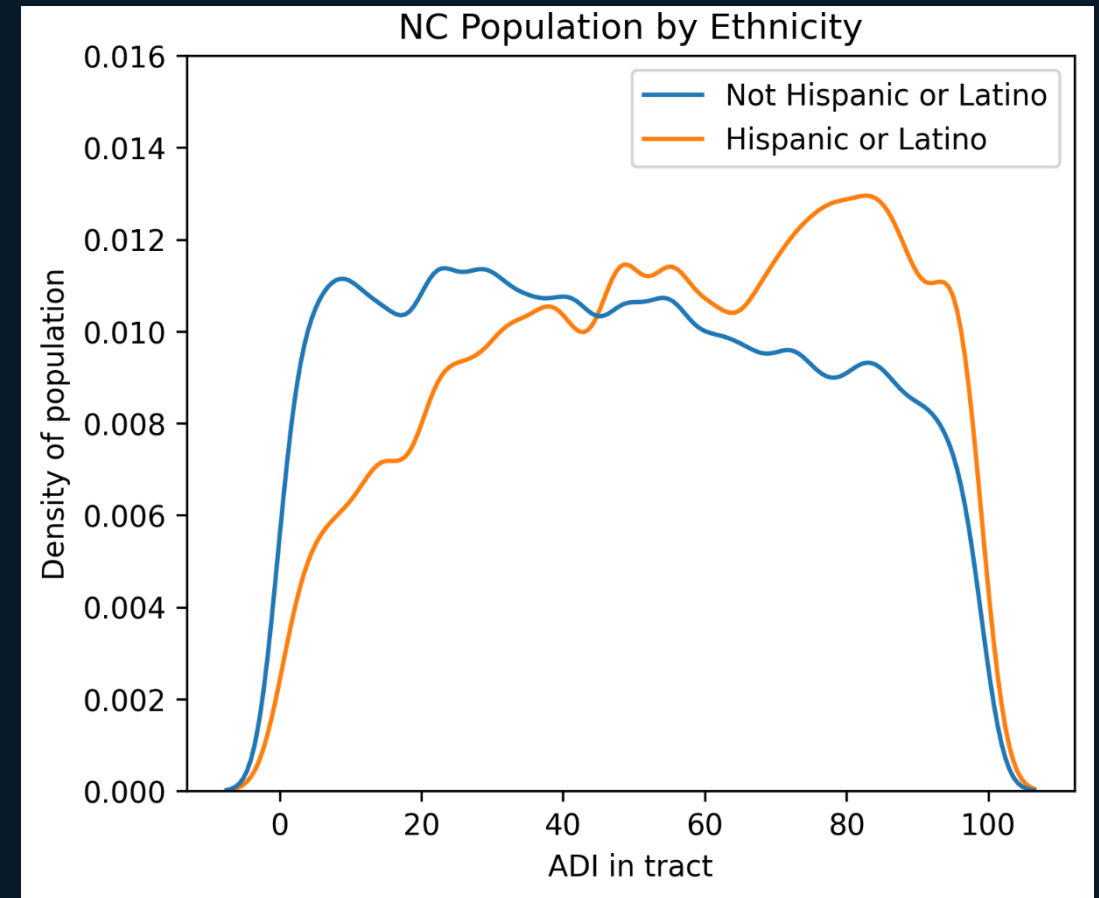


Overall SDOH Comparison



SDOH by Race

SDOH by Ethnicity



Conclusions

- Many similarities and some differences between UNC Health patients and NC population
- Substantial differences in SDOH between racial and ethnic groups
- We present a low-cost, generalizable approach for health care delivery systems
 - Can be extended to more specific patient populations