

Disaggregating ACS Data by Race and Ethnicity: Beyond the U.S. Office of Management and Budget (OMB)'s Categories

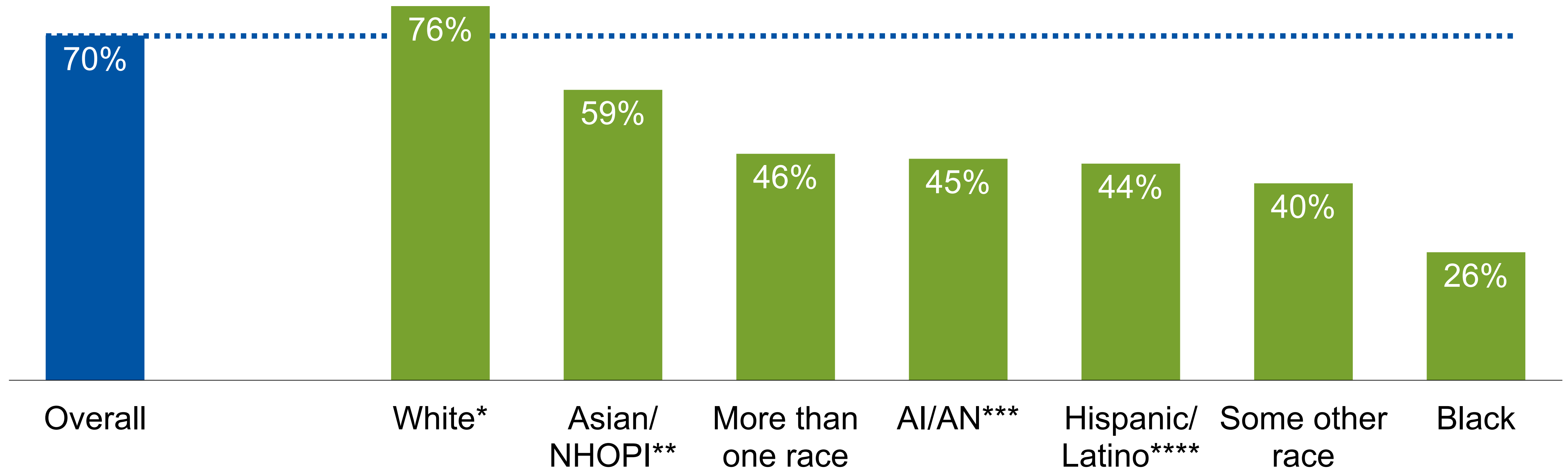
May 18, 2021

American Community Survey Data Users Conference



Highlighting inequities

Homeownership rate, MSP metro



* - Excludes those who identify as Hispanic or Latino

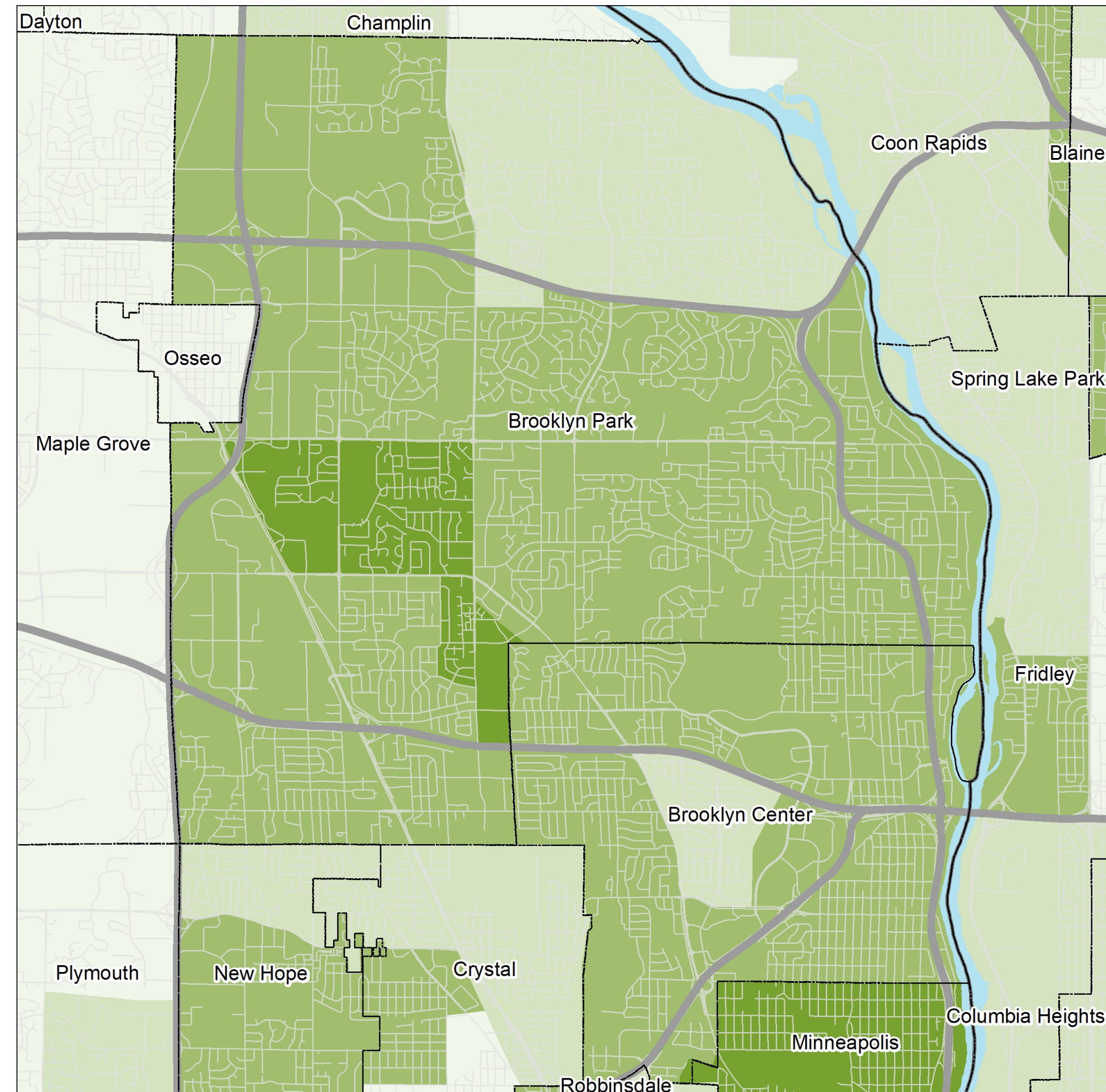
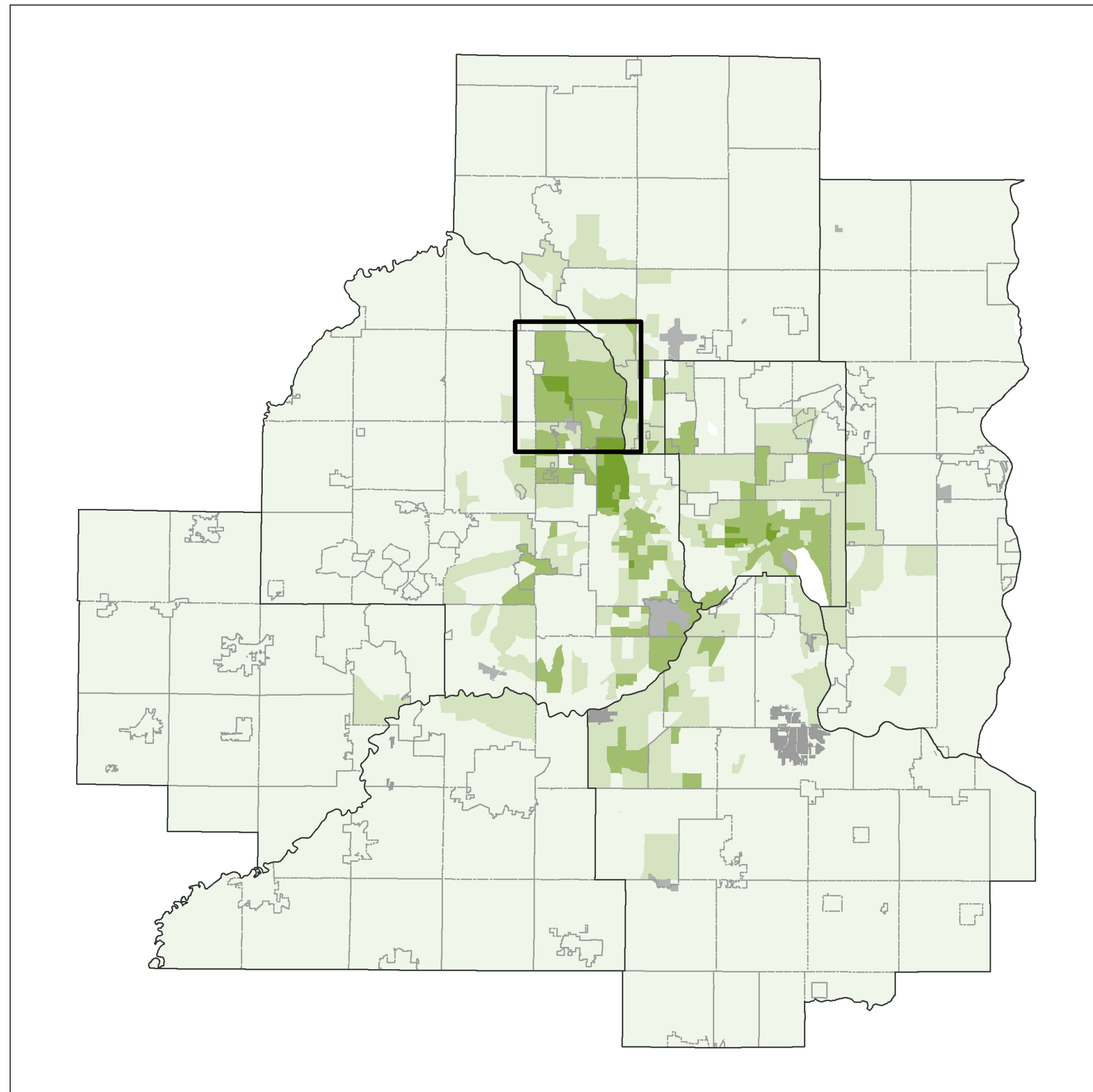
** - Native Hawaiian or Pacific Islander

*** - American Indian / Alaska Native; others prefer Native American or Indigenous

**** - Others prefer Latina or Latinx

Thoughtful community engagement

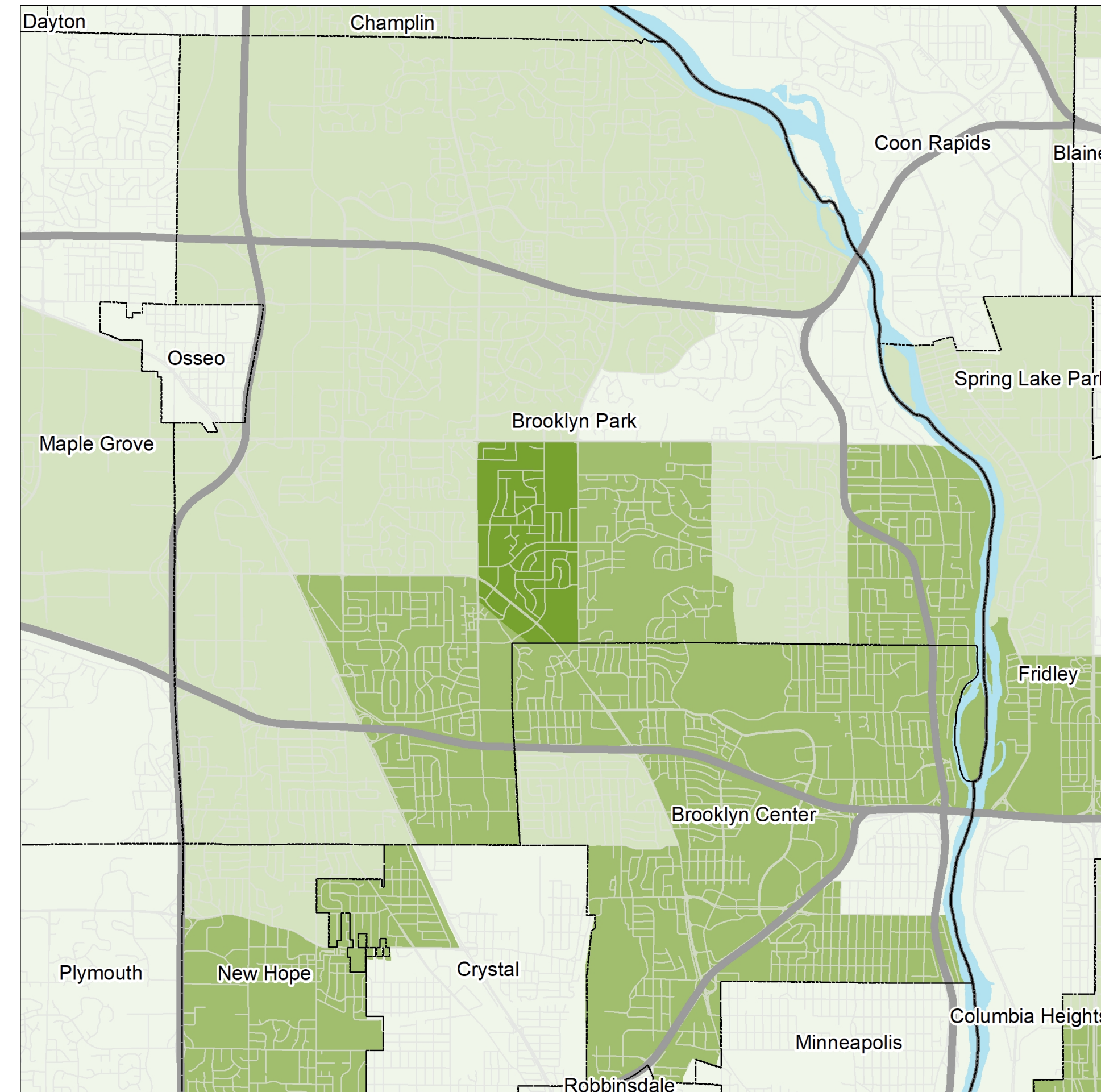
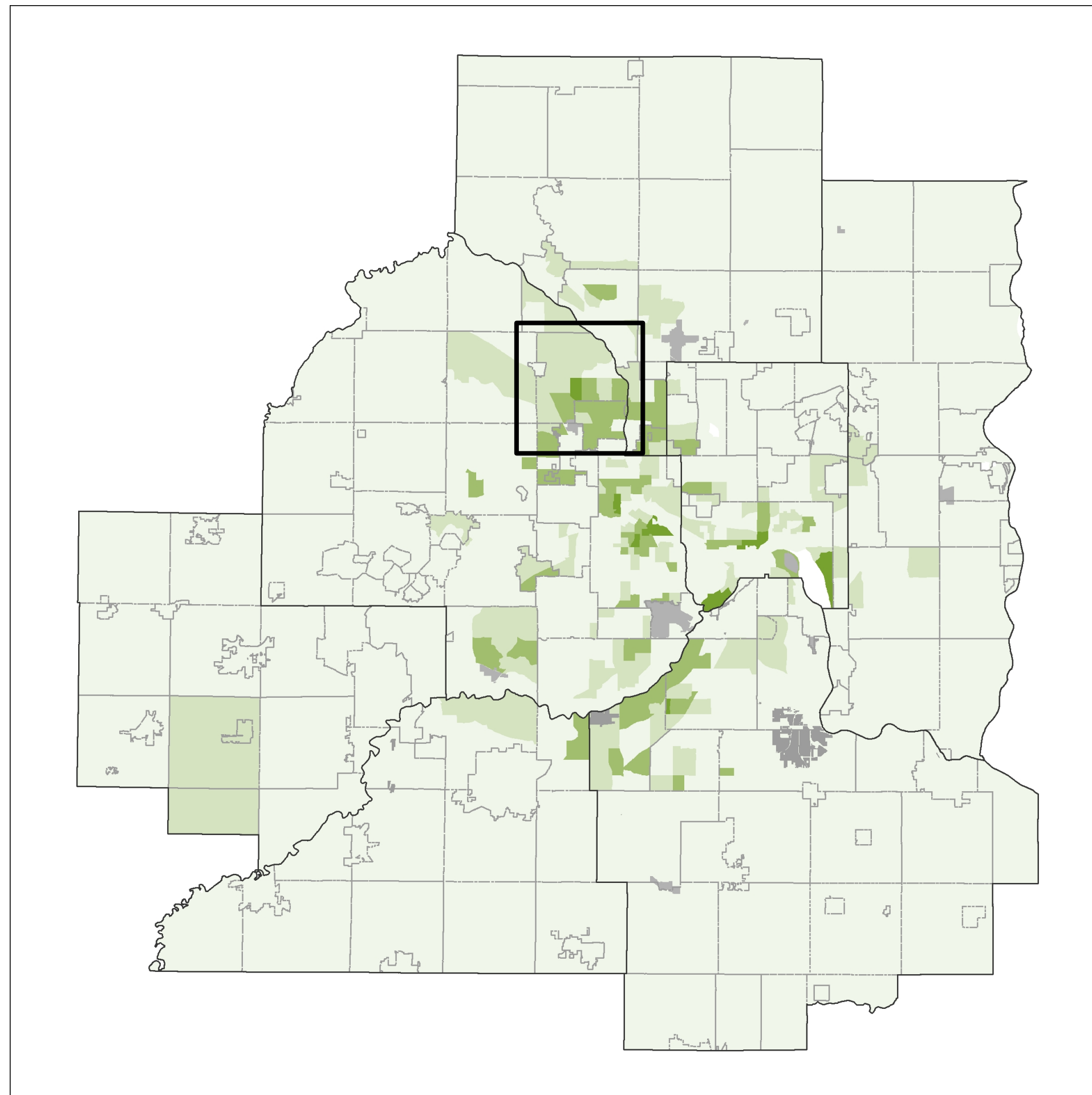
African American ancestry



25.0% or more
10.0% to 24.9%
5.0% to 9.9%
Less than 5.0%

Thoughtful community engagement

Sub-Saharan African ancestry



25.0% or more
10.0% to 24.9%
5.0% to 9.9%
Less than 5.0%

Issues

- PUMS: “What are the characteristics of different groups? How do we show the variation within OMB categories?”
 - Defining groups
 - Balancing data availability with reliability
- Summary files: “How prevalent are different groups? How can we highlight more of the diversity that exists?”
 - Defining groups
 - Identify different White groups?

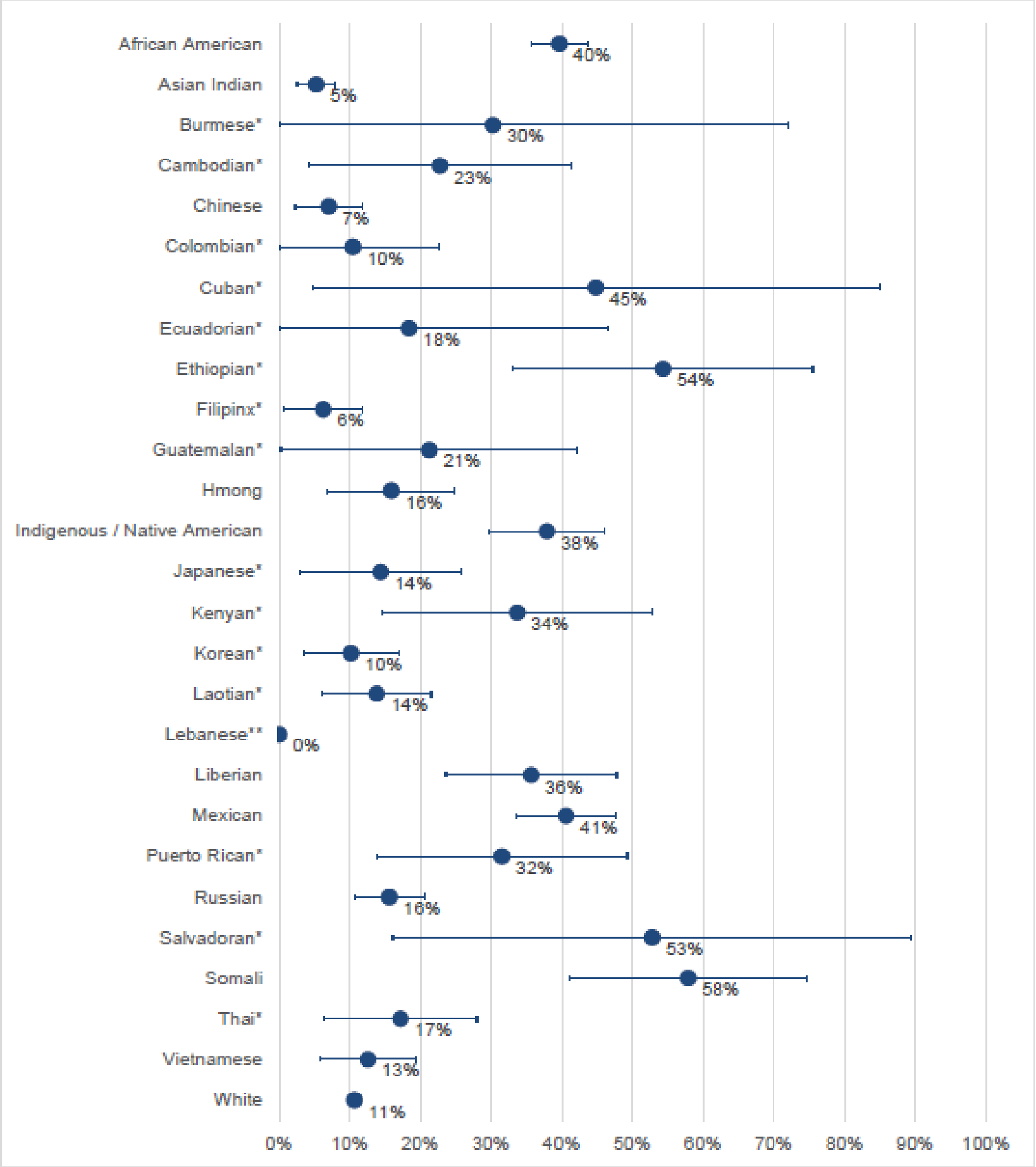
PUMS: Defining groups

Characteristic	Census Bureau PUMS	IPUMS-USA
Detailed race	RAC2P, RAC3P	RACE
Detailed Hispanic/Latino origin	HISP	HISPAN
Ancestry	ANC1P, ANC2P	ANCESTR1, ANCESTR2
Language spoken at home	LANP	LANGUAGE
Place of birth	POBP	BPL

PUMS: Availability ↔ Reliability



Figure 5. Poverty rates by cultural community in Hennepin County outside Minneapolis (showing data for all groups with margins of error)



* - ACS microdata contain fewer than 175 respondents for this cultural community
** - Insufficient information to calculate a margin of error for this cultural community

Note: Error bars show margins of error for each estimate—the range that contains (with 90% confidence) the actual poverty rate in the population.

Source: Metropolitan Council staff analysis of the U.S. Census Bureau's 2014-2018 American Community Survey five-year Public Use Microdata Sample.



PUMS: Availability ↔ Reliability



- Suppress data we consider unreliable?
 - Restrict geographies to large scale?
 - Number of respondents in sample?
 - Margin of error?
- Provide all information and let users decide what to trust?

Summary files: Defining groups

“Umbrella group”	ACS tables with more detail	ACS tables with total
American Indian/Alaska Native	Tribe (B02017)	B02010
Asian/Pacific Islander	Detailed race (B02018)	B02011
Black	Ancestry (B04006) + PUMS distributions	B02009
Hispanic or Latino	Origin (B03001)	B03001
Middle Eastern or North African	Ancestry (B04006)	[none available]
Native Hawaiian / Other Pacific Islander	Detailed race (B02019)	B02012
White (not Hispanic or Latino)	Ancestry (B04006) + PUMS distributions	B03002

Should this be done?

Discussion

- How have you dealt with these issues in your own work? What are other issues you've encountered?
- What other data sources are available?
- What insights from studies of race/ethnicity/culture might help practitioners disaggregate data more thoughtfully?
- Whatever else you'd like to bring up!

Matt.Schroeder@metc.state.mn.us

