

Child Care Supply & Demand

Michael Austrin

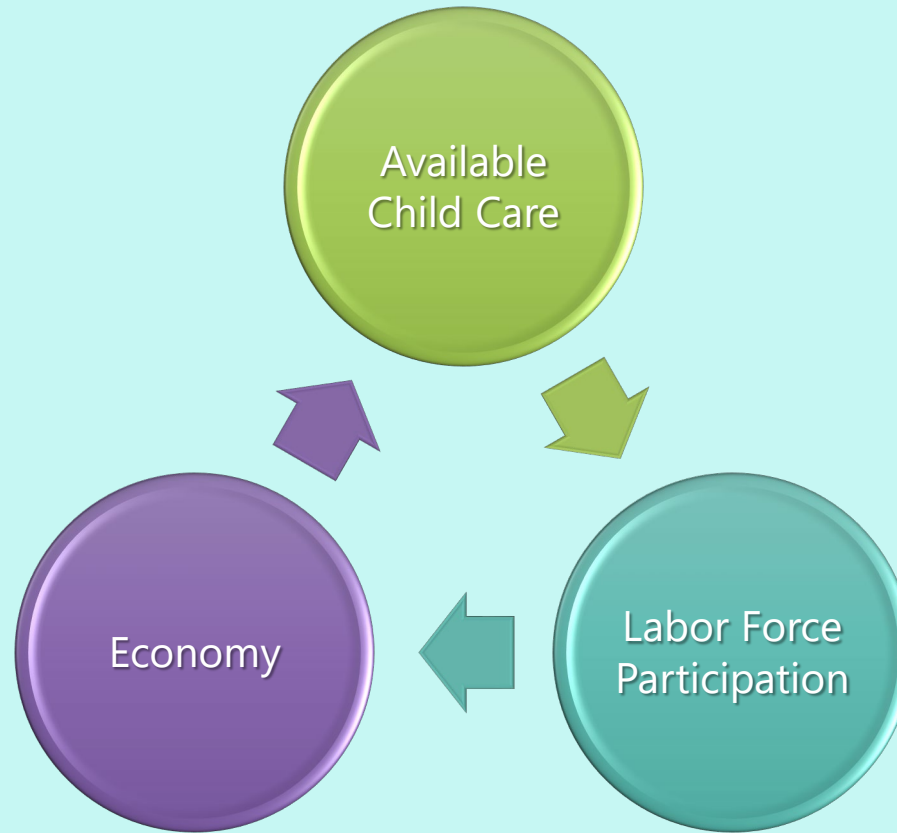


Child Care Aware® of Missouri

- Child Care Resource and Referral Agency for over 22 years
- Help Families Find Child Care/Teach Them What to Look For & Ask
- Child Care System and Workforce Development Expertise
- System Influencer & Advocacy Organization
- Consulting Expertise in Local, Regional, & State Initiatives
- Committed to Finding Solutions for Communities and Employers
- Knowledgeable of National Initiatives and Policies



Child Care is a Labor Force Issue



- 57% of parents said child care responsibilities had impacted their ability to work over the last month. – **Bipartisan Policy Center**
- Child care enables parents to work; 91% of US families with young children have working parents, 98% of married couples with a child under 5 have at least one working parent, and 79% of single mothers and 88% of single fathers are employed. – **The Public Policy Center of The Conference Board**
- Rising income correlates with a further increase in the use of paid child care. As more families use such care, it enables more parents to join or return to the workforce. – **The Committee for Economic Development of The Conference Board**
- Child care is not a family issue. It is a business issue. It affects how we work, when we work and, for many, why we work. – **Harvard Business Review**

- The U.S., child care industry may be small in terms of wages and jobs, but it has an outsized impact on the ability of parents to participate in the labor market. – **St. Louis Federal Reserve Bank**
- Among children in a weekly nonparental care arrangement:
 - 62% attended a child care center, preschool, or pre-K
 - 38% were cared for by a relative
 - 20% were cared for in a private home by someone not related to them– **National Center for Education Statistics**
- The lack of affordable and accessible childcare affects women with young children and will likely keep them out of the labor force due to the rise in childcare costs. – **The Federal Reserve Bank of Cleveland**
- Without child care, employers could experience disruptions in hiring, absenteeism, and turnover – **U.S. Chamber of Commerce Foundation**



Supply vs Demand

Supply

- **Supply (potential)** - all state-recognized and active providers
- Supply includes the number of child care programs and their capacity



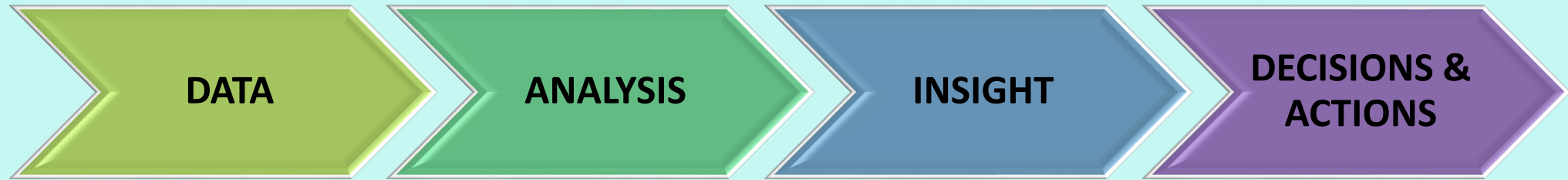
Supply vs Demand

Demand

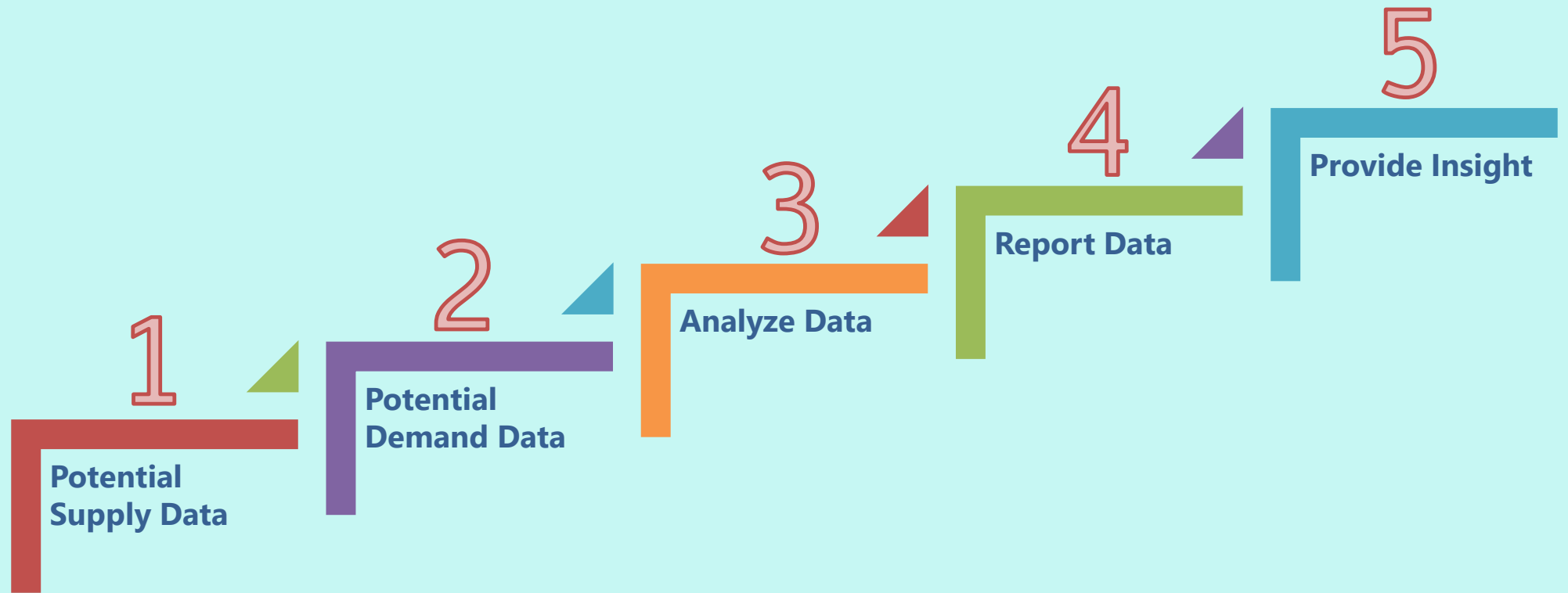
- **Demand (potential)** - all children under age six with parents in the labor force
- Ideally, this would be the rate at which parents and families look for child care
- Difficult to ascertain actual parent demand



Data Only Matters If It Translates Into Action



Data & Analysis Steps



Data & Analysis Steps

1

Potential Supply Data:
*State recognized Child
Care Programs*

3

Analyze Data: *Compare
Potential Child Care Supply
vs. Potential Demand*

5

Provide Insight: *What
Does The Data Tell Us?*

2

Potential Demand Data:
*ACS Under Age 6 with
Parents in Labor Force **

4

Report Data: *Report On
Specific Area with Map
(zip codes or counties)*

* Table B23008: Age Of Own Children Under 18 Years in Families and Subfamilies by Living Arrangements by Employment Status Of Parents



Supply vs Demand

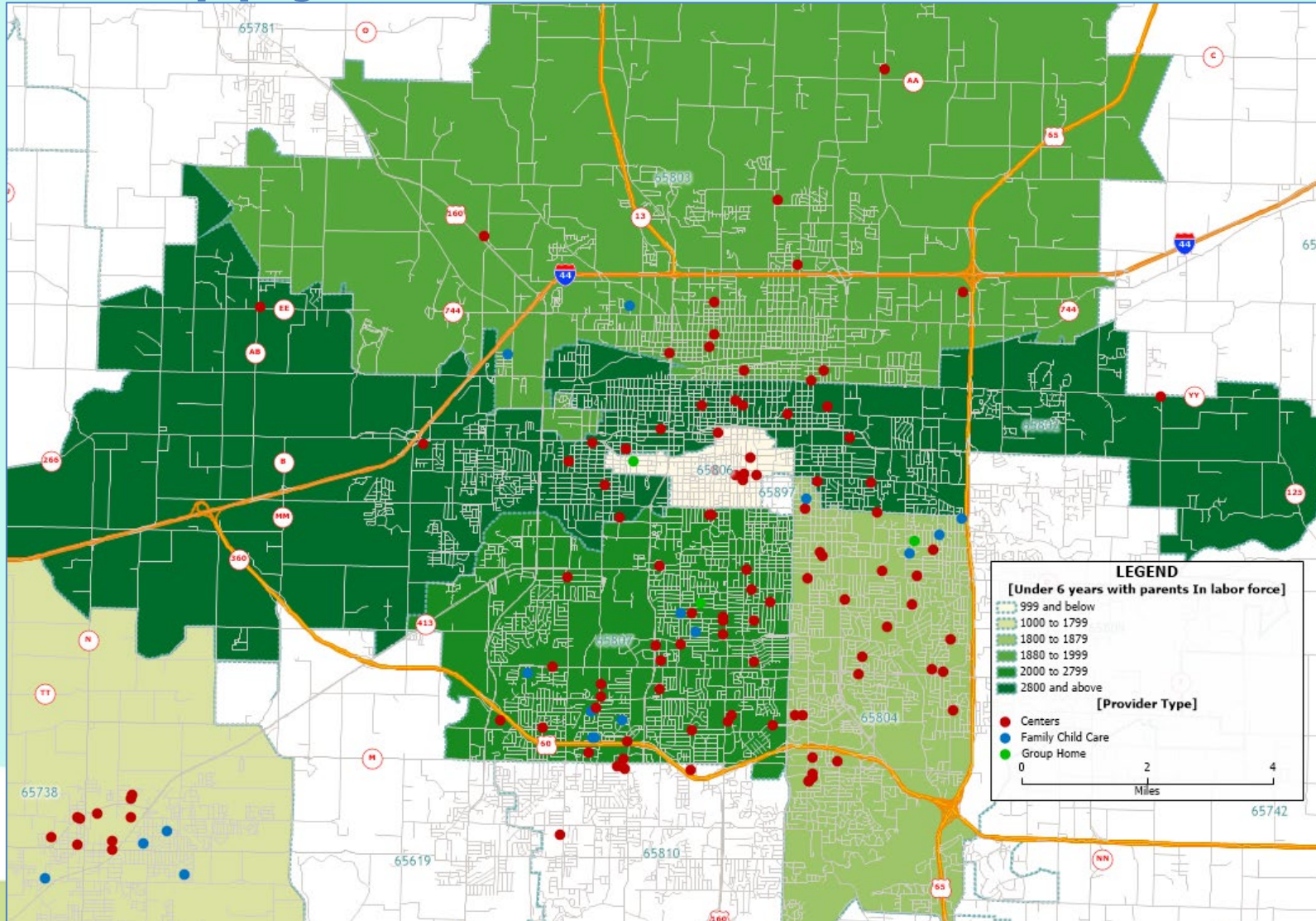
Widget County Analysis

County	Zip Code	City	Total Number of Child Care Programs	TOTAL LICENSED CAPACITY	Population Under 6 years:	** Population Under 6 Years of Age with Parents in Labor Force	Supply vs. Demand
							Variance (Capacity minus Demand)
Widget	12345	Cloudburgh	14	525	1,626	1,210	(685)
Widget	23456	Audol	18	1,124	3,823	2,836	(1,712)
Widget	34567	Hollowwich	14	788	2,742	1,887	(1,099)
Widget	45678	Julford	30	2,305	2,478	1,829	476
Widget	56789	Belltown	8	442	584	290	152
Widget	67890	Jamesport	42	2,783	3,262	2,358	425
TOTALS			126	7,967	14,515	10,410	(2,443)



** Source: US Census, American Community Survey (ACS), 5-year 2017-2021 Estimates

Supply vs Demand



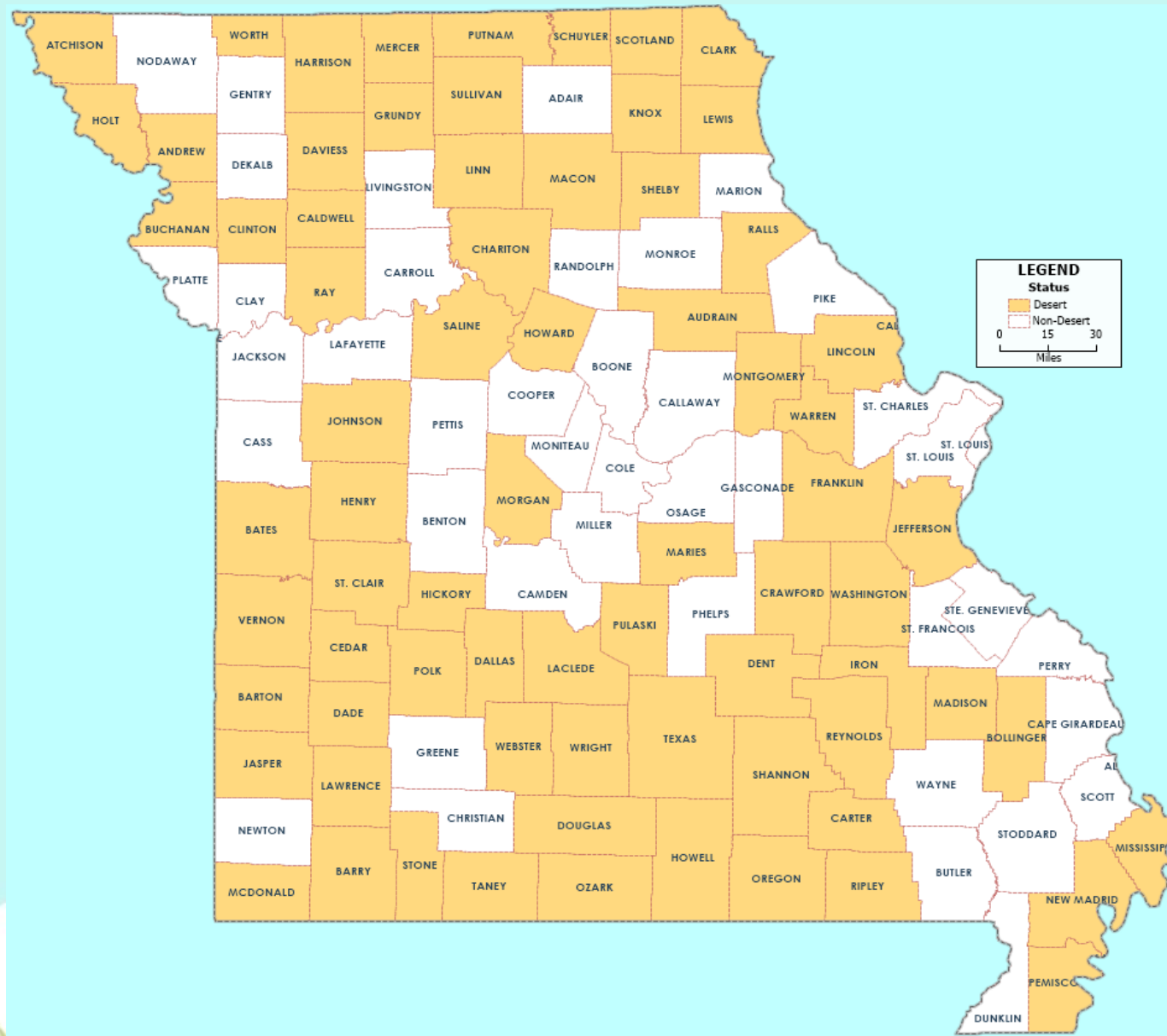
Widget County Analysis

- Dots represent existing child care programs
- Shading represents the density of children under age 6 with parents in the labor force

Source: U.S. Census Bureau, American Community Survey (ACS), 5-year Estimates, 2017-2021

Map created using Maptitude 2022
(Caliper Corporation)





Child Care Deserts

- ❑ A geographical area with an inadequate supply of high-quality, affordable, and accessible child care options.



Thank You.

Michael Austrin
Director, Data & Analysis
Child Care Aware® of Missouri
michael@mochildcareaware.org

