



**WEST PHILLY
PROMISE
NEIGHBORHOOD**

**Strong Children. Strong Families.
Strong Schools. Strong Communities.**

Development of a COVID-19 Urban Vulnerability Data Dashboard to Inform Neighborhood-level Response in Philadelphia

2021 ACS Conference

Samantha Joseph, Daniel Galpern, Felice Le-Scherban, and Amy Carroll-Scott
Drexel University School of Public Health

West Philly Promise Neighborhood

The grant goals focus on building a supportive environment for children to live and learn.



Children enter Kindergarten ready to succeed



Students are proficient in core academic subjects



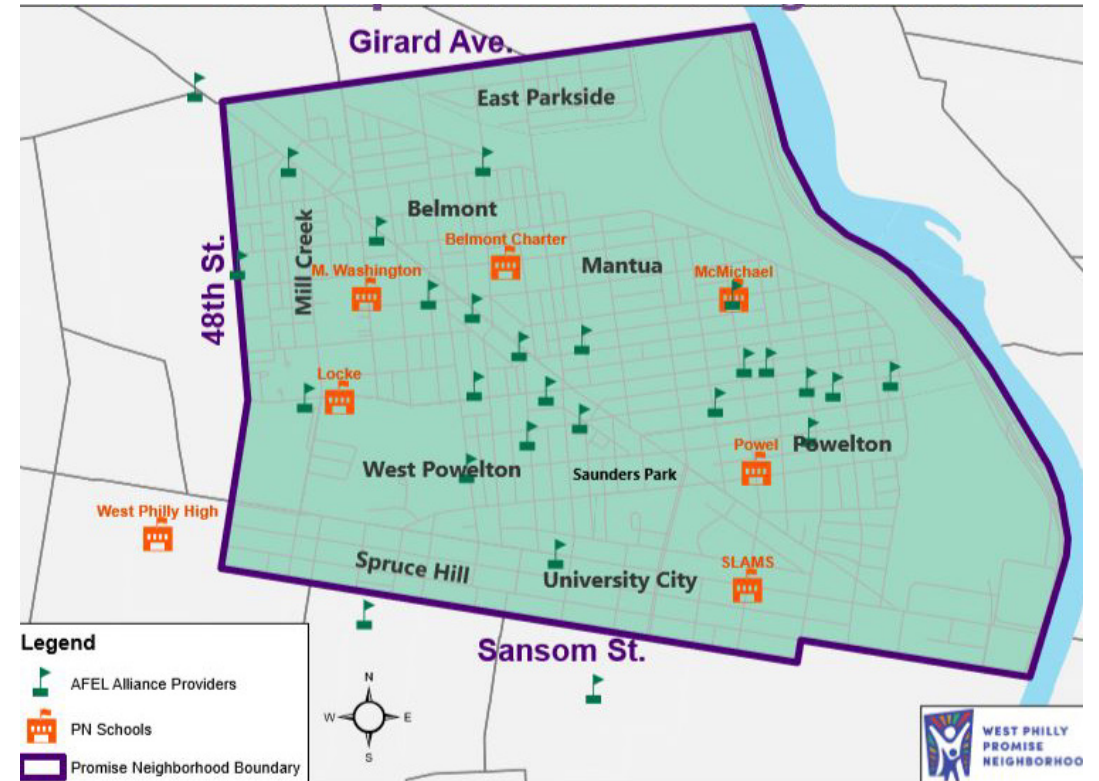
High school students graduate with the skills they need to continue their education and achieve career goals



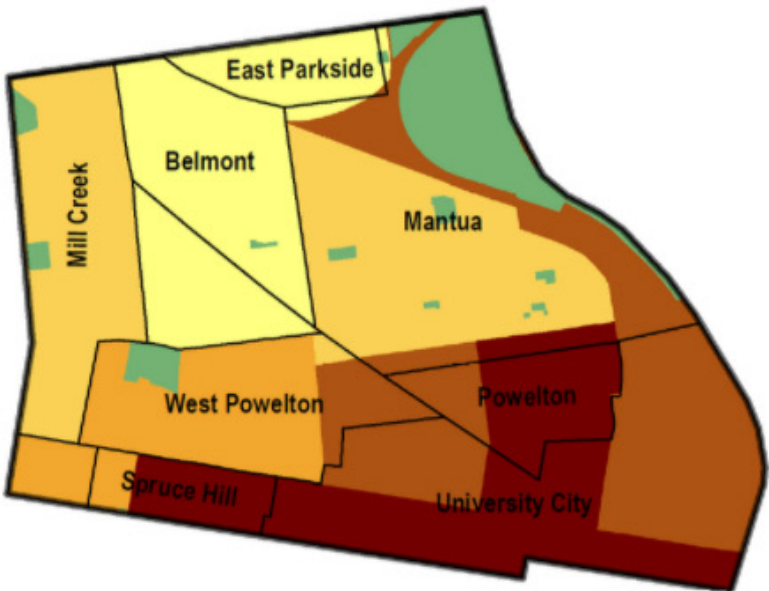
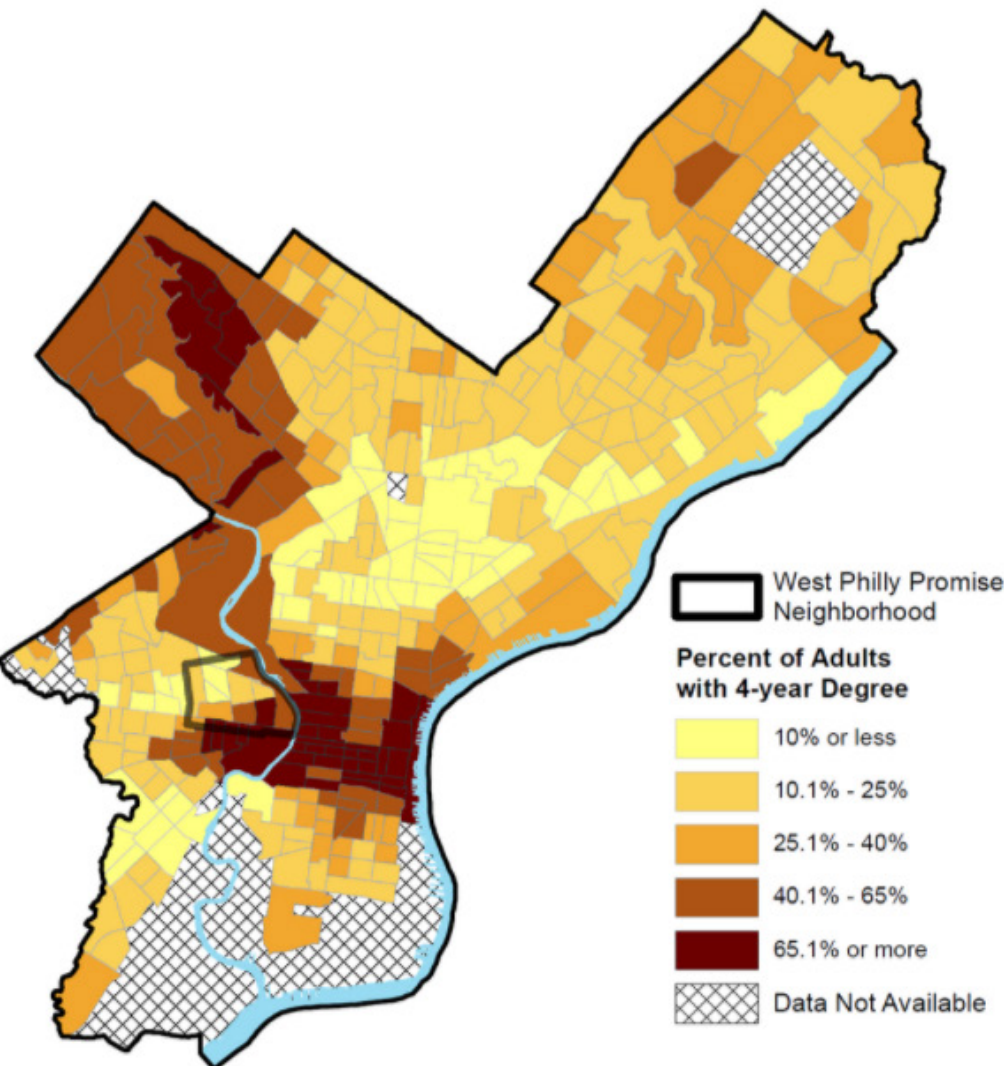
Children and their families thrive in healthy, safe and stable communities



Families and communities are actively engaged in student learning



Neighborhood Indicators



WEST PHILLY PROMISE NEIGHBORHOOD

ISSUE BRIEF: EDUCATION

2020

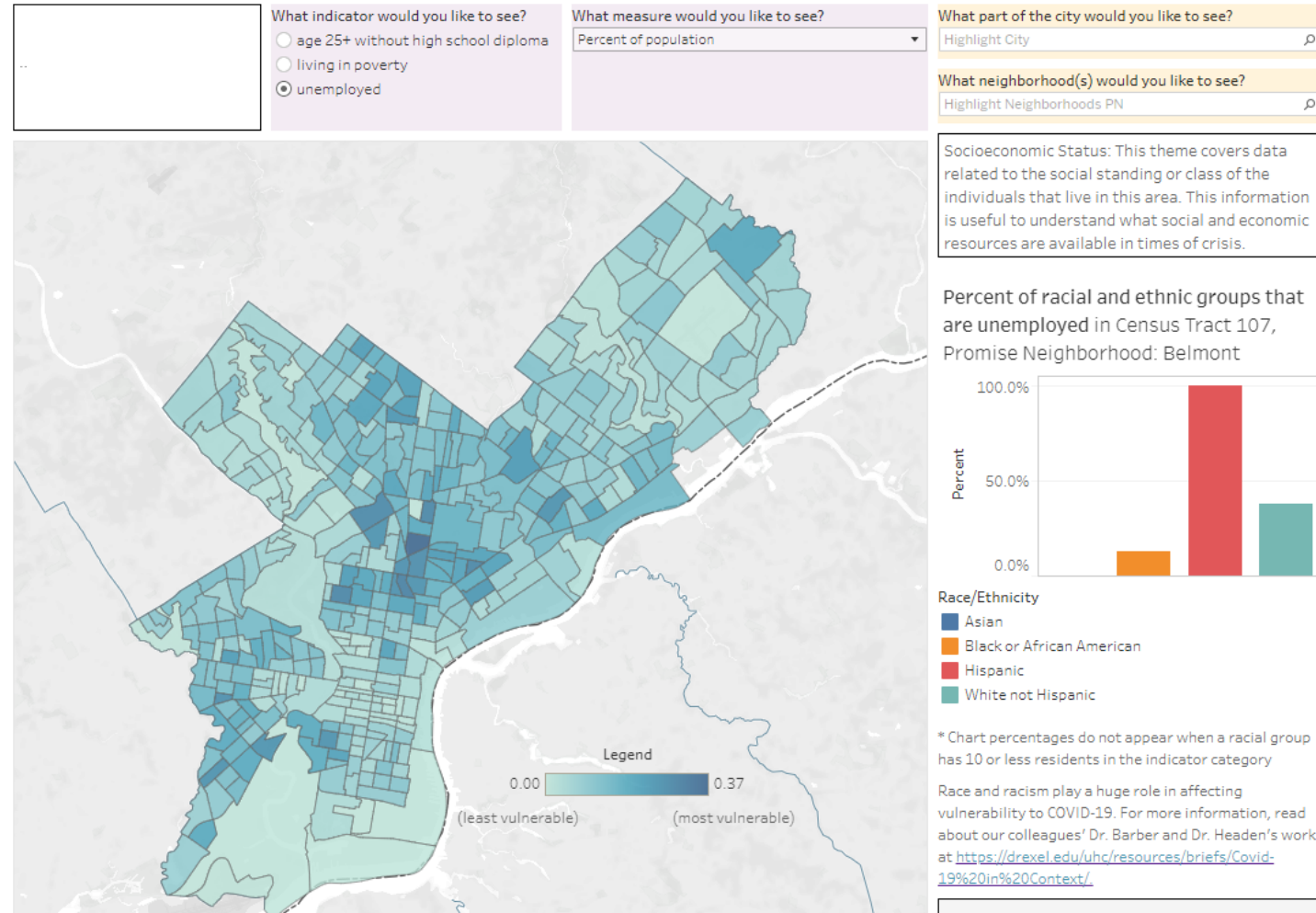
WEST PHILLY PROMISE NEIGHBORHOOD

ISSUE BRIEF: HOUSING

2020

What is the
COVID-19 Social Vulnerabilities
Data Dashboard?

Philadelphia Vulnerability to COVID-19: Socioeconomic Status



- Funded by a small Drexel Rapid Response Grant
- Interactive online dashboard built using Tableau and GIS software
- Maps areas of Philadelphia that will experience highest burden of COVID-19 and its economic impacts
- Shows pre-COVID-19 vulnerabilities and likely hotspots for impacts of COVID-19



WEST PHILLY PROMISE
NEIGHBORHOOD

**Strong Children. Strong Families.
Strong Schools. Strong Communities.**

Why was the tool developed?

- Inform COVID-19 response efforts
 - Identify specific areas and populations for resources allocation
- Provide communities with access to data
 - Contextual data to support funding and advocacy

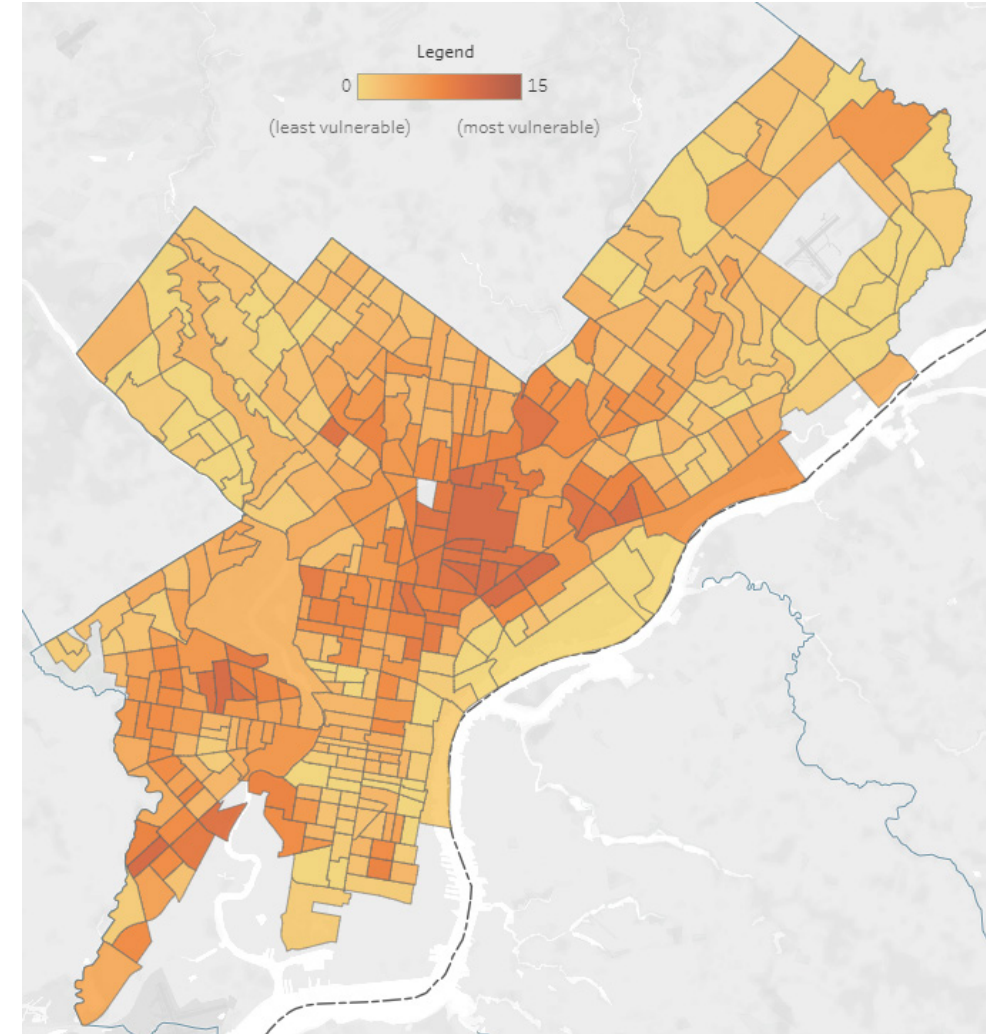
Dashboard 1: CDC Social Vulnerability Index

- Pre COVID-19 vulnerabilities
- CDC indicators

Dashboard 2: Additional COVID-19 Vulnerabilities

- Access to resources, health conditions, housing data

Dashboard 3: Essential Worker Data



What do we mean by “vulnerable”?

- Vulnerability describes an area’s level of risk for a negative impact
- **More vulnerable**
 - Less access to resources
 - Due to historic and systemic inequities, including racism and classism
 - Potentially more exposure to COVID-19, other co-morbidities, worse outcomes for disease, higher rates of death, higher economic burden
- **Less vulnerable**
 - More access to resources
 - Higher likelihood of recovering from economic and social impact of COVID-19, less exposure, fewer co-morbidities, lower rates of death



CDC Social Vulnerability Index

Center for Disease Control's Social Vulnerability Index

- Used by CDC to prepare and recover from natural disasters
- We adapt and use as basis to identify areas and sub-populations that will experience highest burden from COVID-19



**Strong Children. Strong Families.
Strong Schools. Strong Communities.**

WEST PHILLY PROMISE
NEIGHBORHOOD

How was the tool developed?

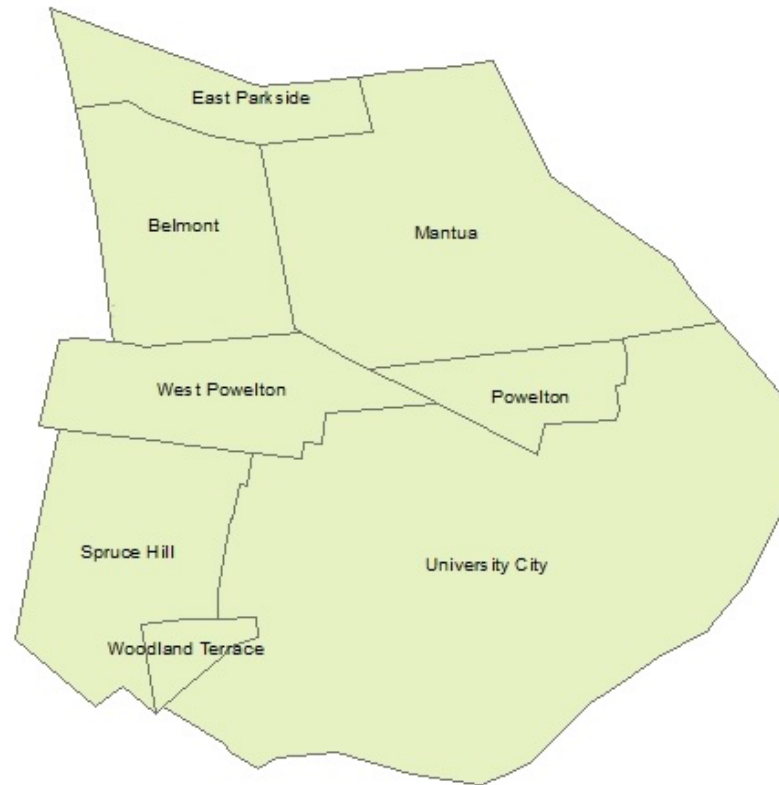
- Identified indicators based on criteria
 - Publicly available
 - Available city-wide
 - Relevant to urban context and COVID
- Data sources
 - Census data from American Community Survey, 2018
 - PUMS data
 - 500 Cities (CDC)
 - US Dept of Housing & Urban Development
 - EvictionLab



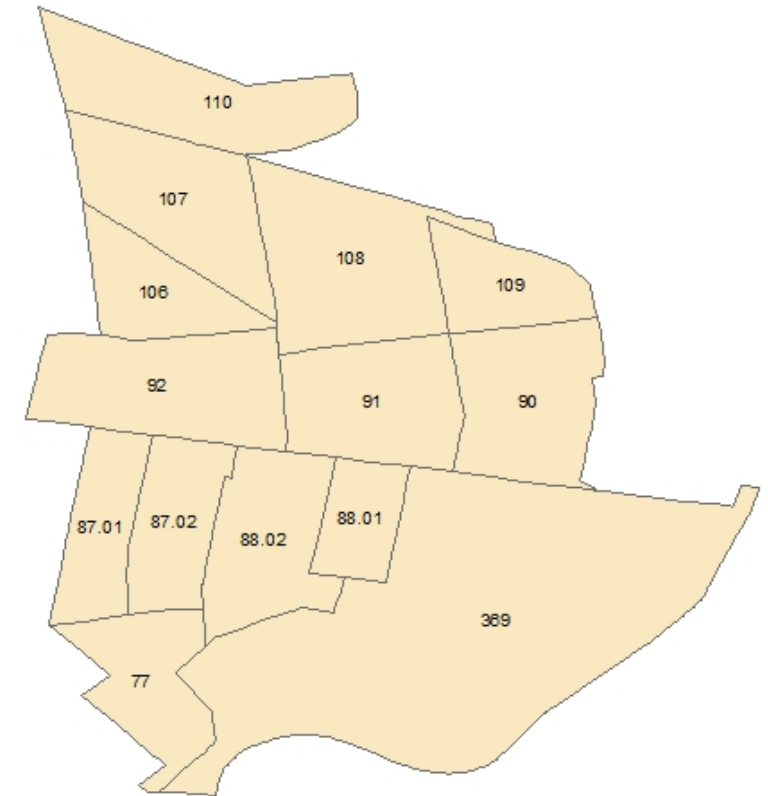
How is the dashboard structured?

- Dashboard structured for usability
- Maps show data by US Census tract
- Can see variations with in neighborhoods
- Possible also to search maps by neighborhood or Phila planning districts

Neighborhoods in 19104



Census Tracts in 19104



**Strong Children. Strong Families.
Strong Schools. Strong Communities.**

WEST PHILLY PROMISE
NEIGHBORHOOD

What data are on the
dashboards?

Dashboard 1: CDC Social Vulnerability Index Data

Socioeconomic Status

- Age 25+ without high school diploma
- Living in poverty
- Unemployed

Household Composition and Disability

- Age 17 or younger
- Age 65+, 85+
- Disabled
- Single-parent household

Minority Status and Language

- Minority
- Speaks English “less than well”

Housing and Transportation

- Crowding
- Multi-unit structures
- No vehicle
- Group quarters



Strong Children. Strong Families.
Strong Schools. Strong Communities.

WEST PHILLY PROMISE
NEIGHBORHOOD

Dashboard 2: Additional COVID-19 Vulnerabilities

Access to Resources

- Households receiving food stamps/SNAP, public assistance
- No internet
- No health insurance

Health Conditions

- High blood pressure
- Obesity
- Diabetes
- Coronary heart disease
- Asthma
- Lung disease

Housing

- Eviction rate
- Housing units with rent or mortgage more than 35% of household income
- Subsidized housing units



**Strong Children. Strong Families.
Strong Schools. Strong Communities.**

WEST PHILLY PROMISE
NEIGHBORHOOD

Dashboard 3: Essential Worker Data

Essential Workers

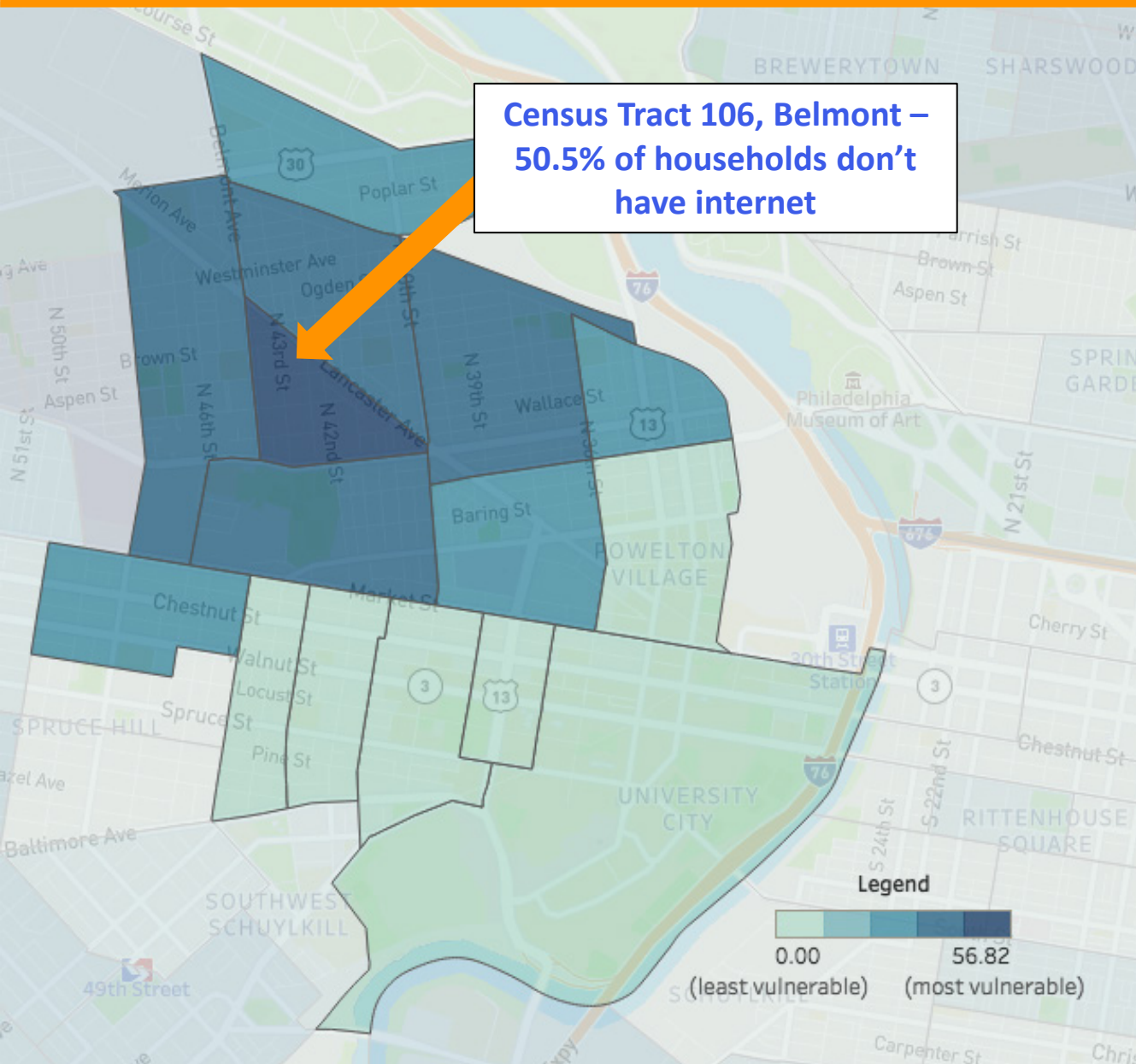
- Industry
- Race/ethnicity
- Pay
- Where essential workers live



Issue-based example:

Looking at the potential
impact of remote learning
throughout the West Philly Promise
Neighborhood

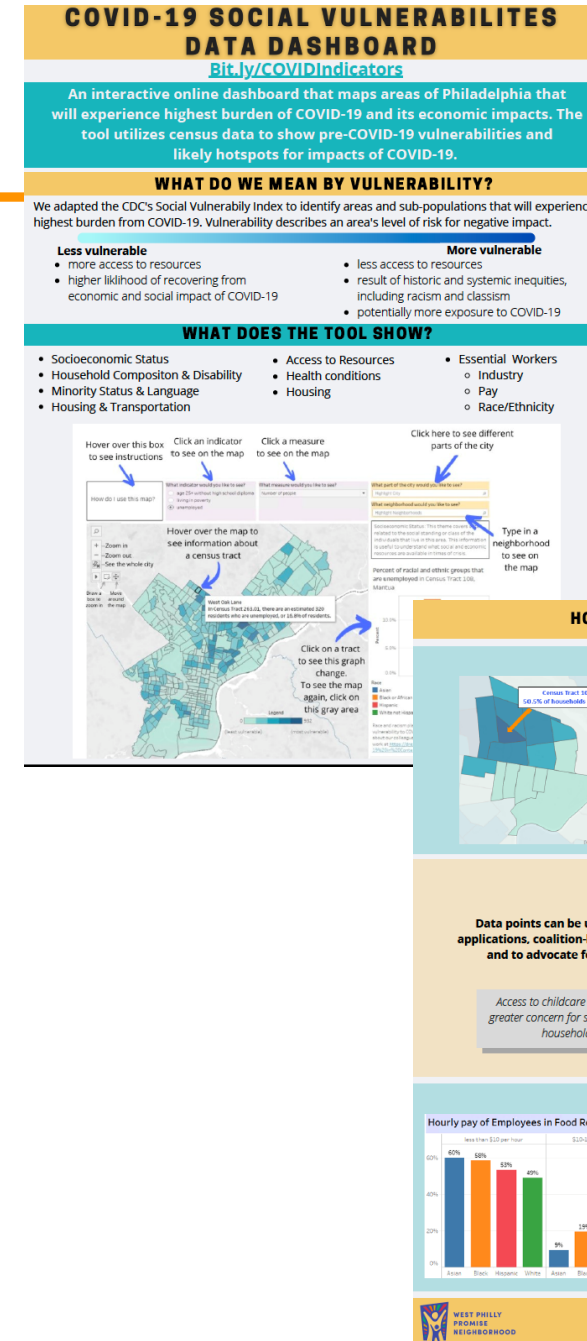
Internet access in Promise Neighborhood



- Internet access has been hugely significant during the pandemic
- Many organizations have been working to increase internet access
 - The City
 - School District chromebooks
 - Comcast's Internet Essentials
 - ExCITE Center Digital Navigators

Dissemination

- See this as a tool and a first step in facilitating the use of data for decision-making and advocacy around COVID-19 relief and recovery efforts
- Beta testing with community leaders
- Promote to data users, health care delivery partners, community leaders, city agency staff, and advocates throughout the City
- One-on-one and group demos
- Eventually publish on methodology and impact of the data tool in response to COVID-19



Strong Children. Strong Families.
 Strong Schools. Strong Communities.

WEST PHILLY PROMISE
 NEIGHBORHOOD

How has the dashboard been shared?

- **Stakeholder Presentations**

- Project Management Team
- Promise Neighborhood Community Advisory Committee (CAC)
- Data Partners
- Philadelphia Public Health Department

- **Issue Specific Briefs**

- Remote Learning
- Essential Workers

- **Urban Health Collaborative Webpage**

- [Bit.ly/COVIDIndicators](https://bit.ly/COVIDIndicators)



Who exactly have we shared the tool with?

- Local

- West Philly Promise Neighborhood
 - Project Management Team
 - Community Advisory Committee
 - Data Partners
- Mantua Civic Association Education Committee
- McMichael School
- Promise Zone Research Connections

- Citywide

- School District of Philadelphia
- Philadelphia Department of Public Health and Dept of Health and Human Services
- Philadelphia Office of the Mayor, Equity and Inclusion
- Philadelphia Office of Community Empowerment & Opportunity
- CHOP Primary Care Network, Karabots team, PolicyLab

- National

- National Neighborhood Indicators Partnership
- American Public Health Association
- Urban Institute
- Streetwyze

Contact

- Sam Rivera Joseph
- Amy Carroll-Scott
- Felice Le-Scherban

sr554@drexel.edu

ac3343@drexel.edu

fzl23@drexel.edu

